



KWAZULU-NATAL PROVINCE
AGRICULTURE AND RURAL DEVELOPMENT
REPUBLIC OF SOUTH AFRICA



KWAZULU NATAL DEPARTMENT OF AGRICULTURE AND RURAL DEVELOPMENT (KZNDARD)

FOOD & NUTRITION PROGRAMMES

ENERGY WATER FOOD CLIMATE NEXUS SUMMIT 2024

03 JULY 2024

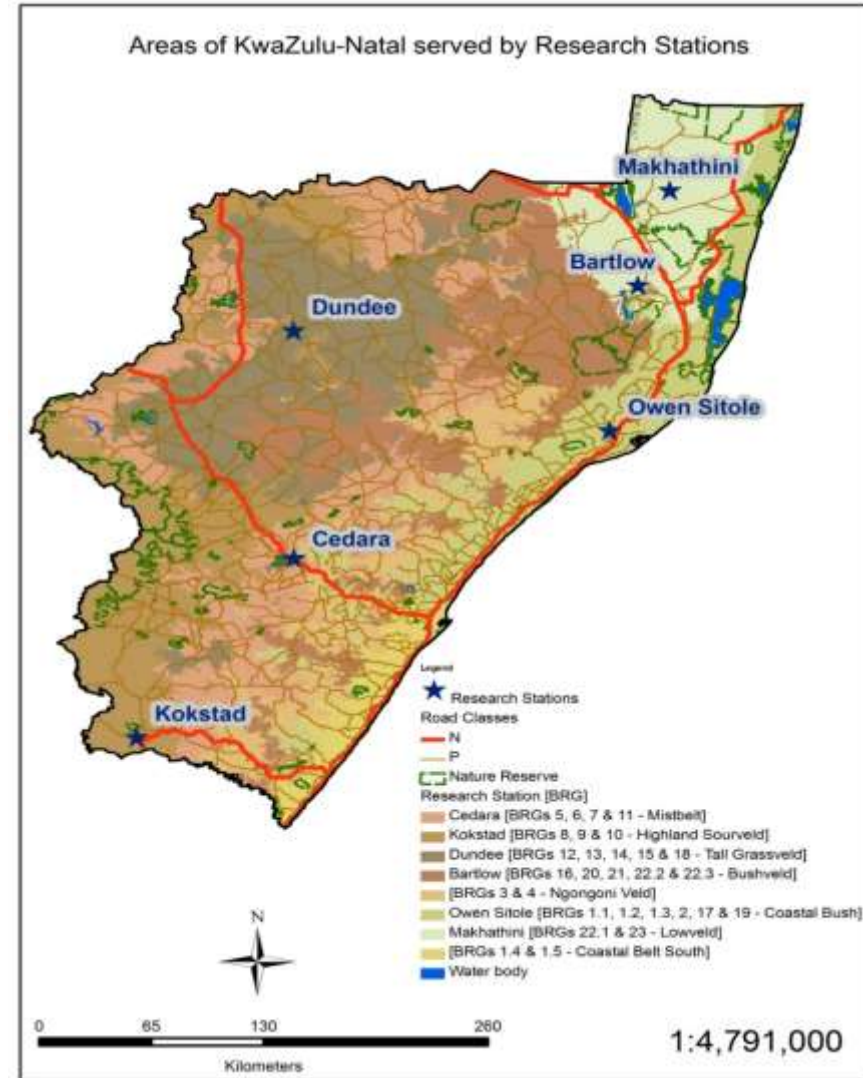
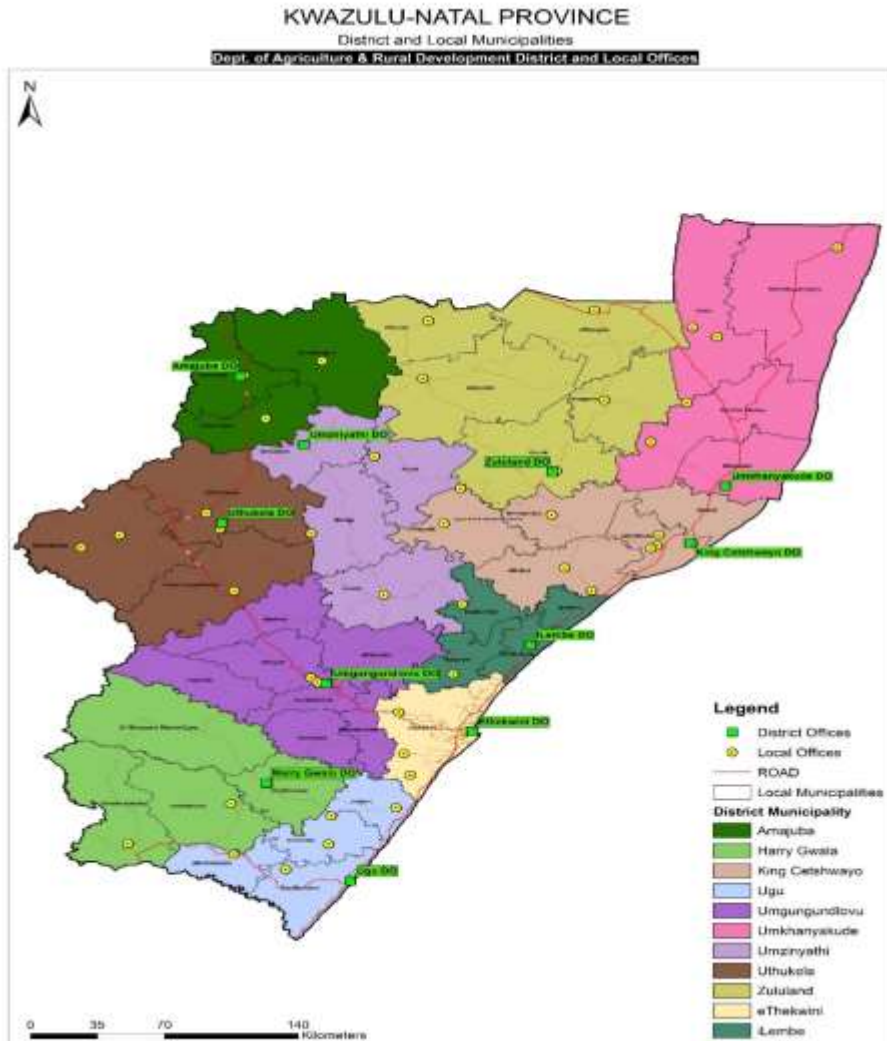


PURPOSE OF THE PRESENTATION

- To present and showcase Food and Nutrition programmes implemented by KZNDARD.
- To present plans for the year 2024/25 Financial year



KZN DARD FOOTPRINT



The content of this document is the property of the Department of Agriculture and Rural Development. It is intended for use by the public and is not to be used for any other purpose. The Department of Agriculture and Rural Development is not responsible for the accuracy or completeness of any information, printed or otherwise, in this document or any other document published by the Department of Agriculture and Rural Development.



Programme Farmer support & Development

Programme Objective

- To provide support to producers through agricultural development programmes. Enable and support transformation of the agriculture sector to actively contribute to economic growth, inclusion, equality and the creation of decent work. Increase food production through producer support and development initiatives.

Sub-Programmes:

- **Sub-Programme 1:** Producer Support Services
- **Sub-Programme 2:** Extension And Advisory Services
- **Sub-Programme 3:** Food Security



Sub-Programme1: Producer support services

Producers support rationale

- KZN, along with Gauteng and Western Cape, contributes significantly to the country's GDP. In 2022, KZN contributed about 16% to the country's overall GDP, only second to Gauteng which contributed at least 33% (Stats-SA, 2023). At a provincial level, KwaZulu-Natal provides livelihoods to thousands of residents through jobs where the agricultural sector contributes between 5% and 6%.
- Since March 2022, agricultural employment in KZN expanded by 68.2%, from 85 thousand in Quarter 1-2023 to 143 thousand Quarter 1-2024.
- KwaZulu-Natal farmers face a numerous difficulties including ever increasing cost of production, ageing or poor infrastructure, inclement weather and outbreak of diseases.
- Cost of production remains the major impediment for poor resource farmers to be able fully engaged in commercial production.
- The causal effect to all to most of the challenges limited access to credit and financing options, along with market access..
- Producers support is intended to mainly cushion farmers to the highlighted challenges and create a platform to transform agricultural industry.



Farmer Support interventions

- To increase the productivity of farmers and ensuring that they positively contribute to the growth of the economy, the department has prioritized some value chains namely Red Meat Value Chain, White Meat Value Chain, Grain Value Chain, Horticulture Value Chain and Sugarcane Value Chain.
- In supporting the above-mentioned value chains producers have been supported through the following interventions in the past 5 years;-
 - *Establishment of new agricultural infrastructure*
 - *Rehabilitation of existing infrastructure*
 - *Provisioning of farmers with agricultural equipment including mechanization*
 - *Provision of breeding stock and production inputs.*



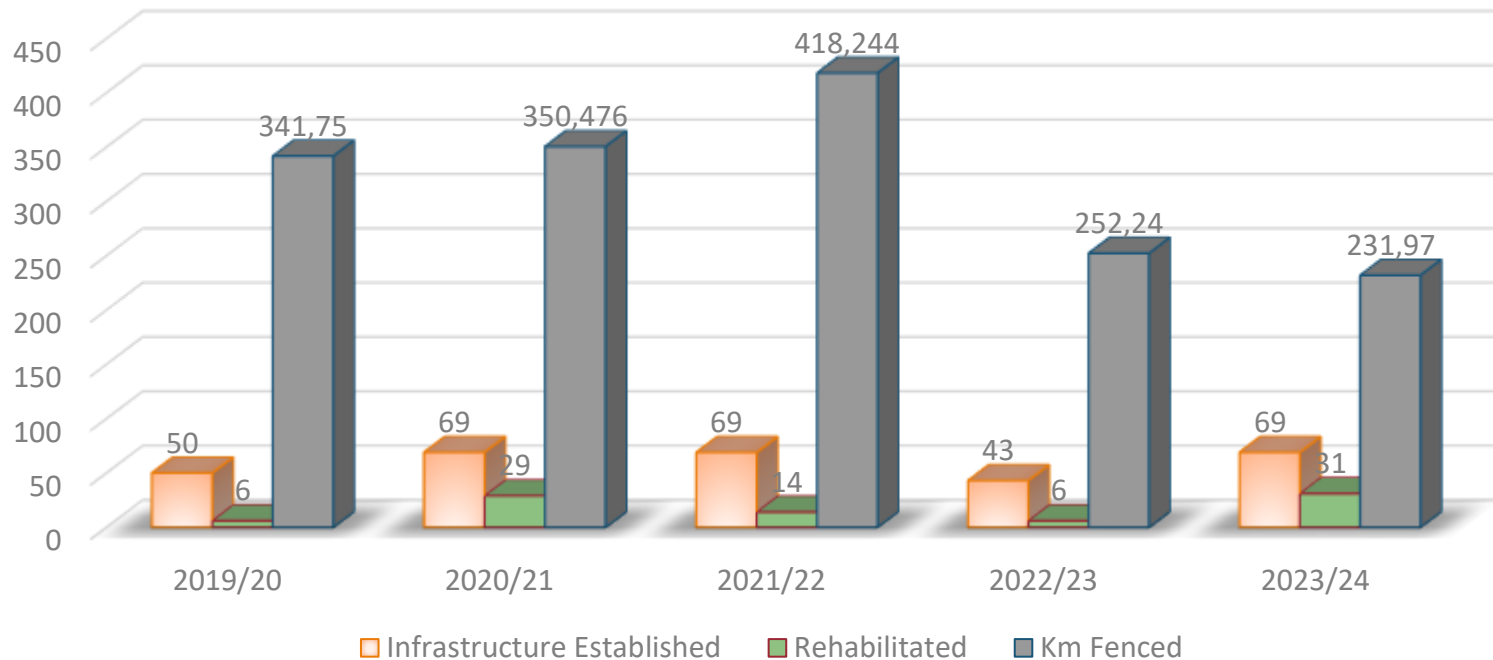
KWAZULU-NATAL PROVINCE
AGRICULTURE AND RURAL DEVELOPMENT
REPUBLIC OF SOUTH AFRICA

GROWING KWAZULU-NATAL TOGETHER

DEPARTMENTAL PROGRAMMES

Infrastructure category supported

Infrastructure Established, Rehabilitated and Km Fenced



The department has established new infrastructure more than rehabilitating infrastructure.

Communal Investment 2023/4

The department has been investing on communal programmes but there was no specific programme for designed with budget for communal investment. In 2023/4 the department formulated communal investment programme which intended to induce livestock production communal areas. The following interventions have been implemented as indicated below

District	New Dip tanks	Dip tank renovation	Boreholes	No of KM fenced	Dam scooping
uMkhanyakude	0	0	4	22,35	1
King Cetshwayo	2	0	1	8,58	9
Zululand	1	0	2	37	3
Amajuba	1	0	0	10,74	0
uMzinyathi	0	0	0	20,74	0
Uthukela	0	0	0	37	5
iLembe	1	0	2	0,00	0
EThekwini	5	0	1	0,27	0
uGu	1	4	1	41,3	0
Harry Gwala	2	0	0	48,00	0
Umgungundlovu	2	1	0	5,99	0
TOTAL	15	5	11	231,97	18



Implementation of Yellow Plant programme

- a) In 2022/23 financial year the department procured eight (8) yellow plant as indicated:
- b) Budget: R15,2mil





YELLOW PLANT OF ACHIEVEMENTS

DISTRICT	ACTIVITY	NO. OF DAYS
Ilembe	Patch gravelling 40kms	8 days
Zululand	10x Dam scooping	28 days
	4x Dam scooping	17 days
	Patch gravelling 15kms	4 days
Uthukela	7x Dam scooping	16 days
Umzinyathi	Patch gravelling 32kms	3 months
KCD	Patch gravelling 35,5kms	22 days
	8x Dam scooping	27 days
	Patch gravelling 3,5kms	4 days

Communal Livestock programme support 2023/4

As part of livestock improvement programme DARD implemented a programme to support traditional councils bull bulls. The following traditional councils have been supported.

District	No of bulls	No of traditional councils	Name of traditional councils and number of bulls
uMkhanyakude	10	10	Tembe, Mbila, Mgeza, Mngomezulu, Siqakatha, Ngwenya, Ntsinde, Makhasa, Nibela and Mqobokazi TC
King Cetshwayo	4	2	Ntembeni and Kwadube TC (2 each)
Zululand	1	1	Ndebele TC
Amajuba	3	2	Mtungwa and Kubheka TC (one each)
uMzinyathi	4	2	Mchunu and Molefe TC (2 each)
Uthukela	6	2	Sithole and Amangwe TC (3 each)
EThekwini	9	4	Ngqungqulu (3). KwaXimba(2), Qadi (2) and Sobona Khona Makhanya TC (2)
uGu	14	7	Ndelu, Qwabe, Zibonda, Amanyuswa, Lushaba, Nsimbini and Nzimakwe TC (2 each)
Harry Gwala	6	3	Embo, Madzikane and Sandile TC (2 each)
Umgungundlovu	6	4	Esiphahleni (1), Qamu (1), Willowfontein (2) and Mpumuza TC (2)
TOTAL	63	37	



KWAZULU-NATAL PROVINCE

AGRICULTURE AND RURAL DEVELOPMENT
REPUBLIC OF SOUTH AFRICA

GROWING KWAZULU-NATAL TOGETHER

HANDING OVER OF RAMS (11 WOOL GROWERS ASSOCIATION)



HANDING OVER MTHALENI DIP TANK



HANDING OVER NCAMBELE DIP TANK





Extension and Advisory Services

Rational For Extension & Advisory Services

Extension and Advisory Service has a measure role to play in agricultural development. Some of the roles are listed below:

- To assist producers, make efficient, productive, and sustainable use of their land and other agrarian resources, through the provision of information, advice, education and training.
- Contribute to accelerate technological, social and economic development
- Assisting producers to identify, production, enterprise and marketing challenges
- Empower and build capacity of producers, producer organizations and commodity groups to ultimately become self-reliant for improved living standards
- Provide information to research institutions on producer's production constraints so that basic applied or adaptive research can be conducted etc .

OBJECTIVES

- To ensure effective linkage and exchange of information between research, extension and producers
- to establish a professional, accessible, reliable, relevant and accountable national extension service that is result oriented
- To ensure pluralistic and coordinated approach for the provision of extension and advisory services

CORE PRINCIPLES

- Poverty eradication
- Equity
- Prioritising production and income opportunities
- Promote sustainability

EXTENSION RECOVERY PLAN PILLARS, BUDGET AND ACHIEVEMENTS

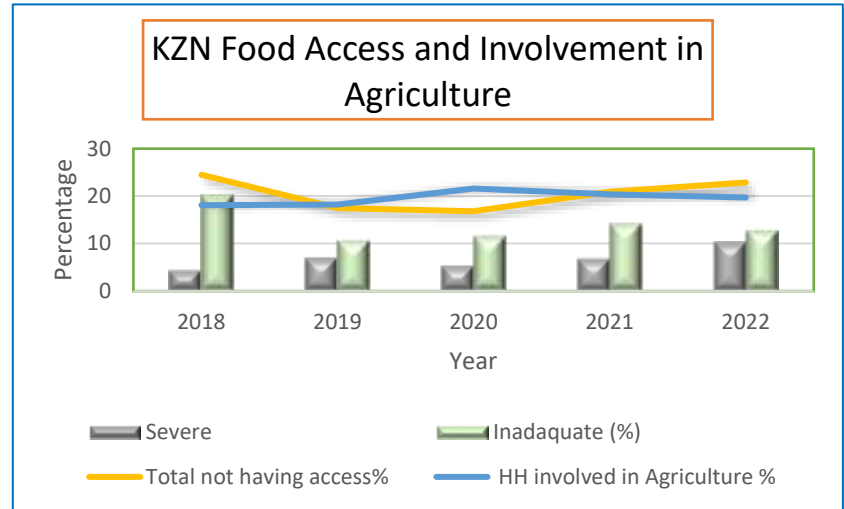
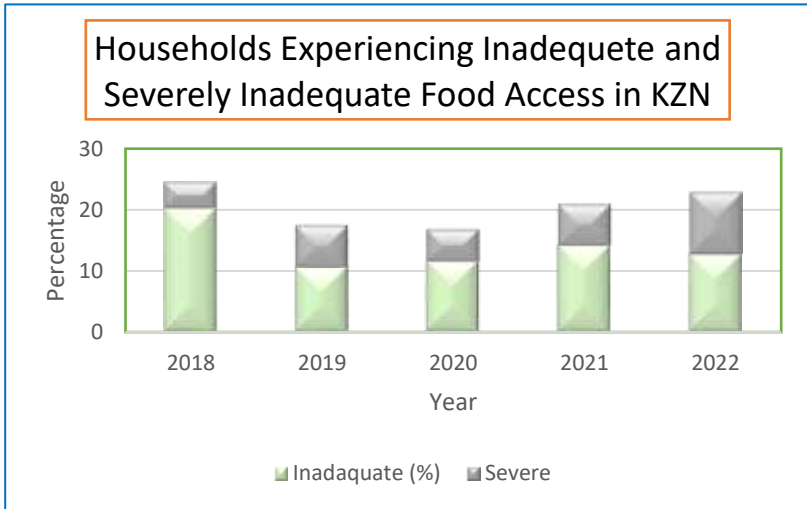
PILLAR	BUDGET 2019-2024	ACHIEVEMENTS
1. Ensure visibility and accountability of Extension Personnel	R 12 281 000	Procurement of uniforms for 804 Extension Practitioners (EPs) & VET Officials, 11 vehicles, provision of travelling and S&T allowance
2. Promote professionalism and improve image and professionalism Extension	R 750 000	Conducted 3 Extension Summit, 2 Conferences
3. Recruitment of Extension Personnel	R99 272 585	Employed 71 Contract Agric advisors to augment capacity of Extension personnel and address farmer ratio.
4. Re-skilling and re-orientation of Extension Personnel	R800 000	Trained and capacitated 100 Extension Personnel on Extension methodology , 25 EPs on sugarcane modular courses
5. Provision of ICT infrastructure and other resources	R23 030 885	Procurement of digital reporting system for EPs, Procurement of 466 laptops, 519 external hard-drive, 67 projector , provision of airtime & data for 701 Extension personnel
TOTAL	R136 134 470	



Subprogramme 3: Food Security

Producers support rationale

- The right to access to sufficient food is firmly entrenched in the Constitution of the Republic of South Africa (Ch 2 Sect 27 (1)(b); everyone has a right to sufficient food and shelter)
- South Africa is one of the major exporters of nutritious agricultural produce but has the highest number of people who remain food insecure as many poor people do not have access to it.



- According to GHS, over the years the food access in KZN has been fluctuating. In the year 2018, inadequate and severely inadequate food access collectively reached almost 25%. These numbers decreased over the years and started mounting in the year 2021 with a collective percentage of 21,9%.

Food Security Interventions

- Food and nutrition security is one of the fundamental strategic imperatives of the government of South Africa.
- To address the plight of households who do not have access to nutritious food the department supporting vulnerable households and subsistence farmers with the following interventions:-
 - ❖ Multi-planting Season
 - Provisioning of mechanization Services
 - Provision of production inputs like seeds/seedlings, fertilizers and chemicals
 - ❖ Households Food Production
 - One home One garden
 - Community Gardens
 - Institutional Gardens (Crèches, Schools & Churches)
 - Pullets
- The seed multiplication programme where seed and seedling are produced by the department plays a vital role.
- The department has started the programme of producing pullets (indigenous chickens) internally and the programme is doing very well.
- The programme is bias towards vulnerable groups which include women, youth, people living with disability and veterans.



KWAZULU-NATAL PROVINCE
 AGRICULTURE AND RURAL DEVELOPMENT
 REPUBLIC OF SOUTH AFRICA

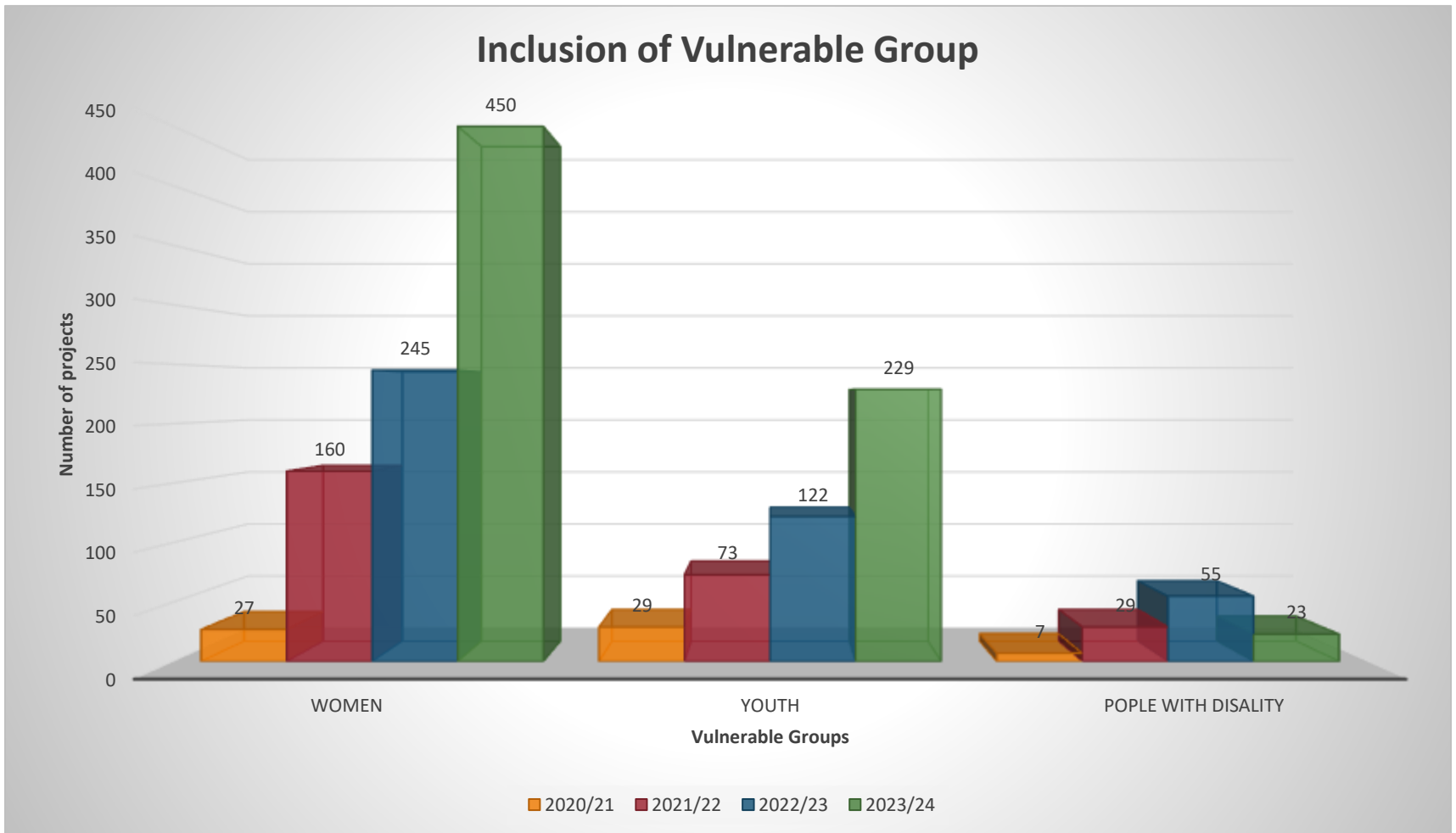
Highlights of Food Security Achievements over the past five years

Multi-planting Season



- Over the past 5 years the department targeted to plough 99 000ha and achieved a total of over **114 000ha**
- Commodities supported: Maize, Beans, Vegetables & other crops
- DARD supported over the past 5 years, a total of 106 762 households against the target of 87 000 subsistence farmers.

2.5 Support for vulnerable groups small-holders





4. 2019/2024 PROJECTS



IBUTHO TUNNELS

KCD-VEGETABLES

PROJECT LOCATION	BENEFICIARY ANALYSIS	JOB CREATION	TOTAL BUDGET (R)
District Municipality: KING CETSHWAYO Local Municipality: UMLALAZI	Total No. of Beneficiaries: 05 No. of Youth: 0 No. of Woman: 02 No. of People with Disability: 0	Total No. of Jobs Created: 02 Permanent: 04 Seasonal/Temporal Jobs: 02	R1 799 250

PLANNED PROJECT ACTIVITES (2019/2020)		PROJECT ACTIVITES IMPLEMENTED	PROJECT STATUS
Activities: Construction of 5 tunnels,@ R 990 000 drilling of borehole @ R 350 000, 0,6 km fencing @ R60 000, Renovation of pack house @ R 200 000, & inputs @R199 250	Year Of Implementation: 2019/20	Activities: tunnels, borehole, fencing, pack house, provision of inputs. 100% complete	Expenditure Budget: R 1 798 927 Year Of Implementation: 2019/20 -Project was affected by inclement weather - Tunnels blown by wind - Project leased to local farmer





MASISUKUME TUNNELS

PROJECT LOCATION	BENEFICIARY ANALYSIS	JOB CREATION	TOTAL BUDGET (R)
District Municipality: KING CETSHWAYO Local Municipality: UMLALAZI	Total No. of Beneficiaries: 07 No. of Youth: 0 No. of Woman: 05 No. of People with Disability: 01	Total No. of Jobs Created: 11 Permanent: 05 Seasonal/Temporal Jobs: 11	R1 250 000,

PLANNED PROJECT ACTIVITES (2019/2020)	PROJECT ACTIVITES IMPLEMENTED	PROJECT STATUS
Activities: Construction of 6 tunnels @R800 000, mini pack house @ R 50 000, 0,6 km fencing @R60,000, irrigation@ R90 000 electricity R50 000, and inputs @R 200 000	Year Of Implementation : 2019/20 Activities: tunnels, pack house, fence, irrigation, electricity, provision of inputs . 100% complete	Expenditure Budget: R 1 250 000 Year Of Implementation: 2019/20 -Project is currently non operational There is dispute among members - Lease agreement in progress with interested farmer

KCD-VEGETABLES





MTOLO FARMING

KCD-VEGETABLES

PROJECT LOCATION		BENEFICIARY ANALYSIS		JOB CREATION		TOTAL BUDGET (R)	
District Municipality: KING CETSHWAYO Local Municipality: UMFOLOZI		Total No. of Beneficiaries: 04 No. of Youth: 02 No. of Woman: 01 No. of People with Disability: 0		Total No. of Jobs Created: 02 Permanent: 02 Seasonal/Temporal Jobs: 0		R 574 820	
PLANNED PROJECT ACTIVITES (2019/2020)			PROJECT ACTIVITES IMPLEMENTED			PROJECT STATUS	
Activities: Construction of 2 Tunnels Rehabilitation of 4 tunnels, @R400 000 production inputs and equipment @R 174 820			Year Of Implementation: 2019/20 Activities: Tunnels construction and renovations, provision of production inputs and equipment. 100% complete			Expenditure Budget: R574 820 Year Of Implementation: 2019/20 <ul style="list-style-type: none"> • The project is operational but not to its full capacity • Affected by weather 	





MAZULU LAYERS

PROJECT LOCATION	BENEFICIARY ANALYSIS	JOB CREATION	TOTAL BUDGET (R)
District Municipality: KING CETSHWAYO Local Municipality: UMHLATHUZE	Total No. of Beneficiaries: 05 No. of Youth: 05 No. of Woman: 04 No. of People with Disability:0	Total No. of Jobs Created: 0 Permanent 0 Seasonal/Temporal Jobs: 05	R 1 516 398

PLANNED PROJECT ACTIVITES (2019/20)	PROJECT ACTIVITES IMPLEMENTED	PROJECT STATUS
Activities: Construction of 1 X 1000 layer unit, @ R746 398, supply of production inputs and equipment	Activities: Site has been handed over to the Service Provider Site levelling and earth work underway. 100% complete	Expenditure Budget: R1 516 398 Year Of Implementation: 2019/20 <ul style="list-style-type: none"> The project is non operational The roof was blown by strong winds and replaced by farmer but could not put it back to operation



KCD-LAYERS



YAMANDOSI MMF

PROJECT LOCATION	BENEFICIARY ANALYSIS	JOB CREATION	COMMODITY	TOTAL BUDGET (R)
District Municipality: UMKHANYAKUDE	Total No. of Beneficiaries: 01 No. of Youth: 0 No. of Women: 0 No. of People with Disability: 0	Total no. Of jobs created: 3 Permanent: 3	Beef	R 4 000 000.00

ACTIVITIES PLANNED IN 2019/20		PROJECT STATUS
CASP Budget Approved R 4 000 000.00	Activities planned <ul style="list-style-type: none"> •Purchase of combo tractor @R1 058 575.00 •Construction of storage unit @R500 000.00 •Construction of handling facility. •Purchase of weaners and feed. 	Non-functional due to FMD

UMKHANYAKUDE-BEEF





NJOJO FEEDLOT

PROJECT LOCATION	BENEFICIARY ANALYSIS	JOB CREATION	Project Size	Commodity	TOTAL BUDGET (R)
District Municipality: UMKHANYAKUDE	Total No. of Beneficiaries: 01 No. of Youth: 0 No. of Women: 0 No. of People with Disability: 0	Total No. of Jobs Created:5 Temporal Jobs:2	Feedlot (4 holding pens)	Beef	R 4 000 000.00

Activities to Implemented in 2019/20		PROJECT STATUS
Budget Tranche 1 2019/2020 R2 000 000.00	Activities implemented: TRANCHE1 ➤ Groundwork for 4 holding pens (Steel pipes for holding pens): R62 933.00 ➤ Feed storage shed: R500 000.00 ➤ Tractor combo (tractor and feed mixer): R1 058 575.00 ➤ 32 Weaners: R 266 242.15	Project is not operational due to FMD outbreak Restrictions on movement inability to sell livestock And feed costs led to collapse of the project

UMKHANYAKUDE-BEEF



MKHIZE FARM

PROJECT LOCATION	BENEFICIARY ANALYSIS	JOB CREATION	COMMODITY	TOTAL BUDGET (R)
District Municipality: UMkhanyakude Local Municipality: Big 5 Hlabisa	Total no. of beneficiaries:1 No. of Youth:0 No. of Women:0 No. of PWD:0	Total no. of jobs created: Permanent: 3 Seasonal:	Beef	R 4 265 000.00

BUDGET:	PLANNED ACTIVITIES	ACTIVITIES IMPLEMENTED IN 2019/20	PROJECT STATUS
Voted Funds Budget Approved R 4 265 000	Planned Activities: <ul style="list-style-type: none"> •Erection of 12km fence for division of camps •Purchase of breeding stock (150 pregnant heifers) •Purchase of 6 breeding bull •Purchase of winter leaks & Summer licks Veterinary (Medicines and Vaccines) 	Erection of 12km fence @R875 000,00 division of camps @R420 000,00 •Purchase of breeding stock (150 pregnant heifers@R2 550 000, •Purchase of 6 breeding bull @R300 000 •Purchase of winter leaks@ R50 000,00 & Summer licks @R50 000,00 00Veterinary (Medicines and Vaccines)@R200 000	Non- functional due to harsh weather effects, disease outbreak and FMD outbreak



SIPHULWAZI YOUTH PIGGERY

PROJECT LOCATION	BENEFICIARY ANALYSIS	JOB CREATION	COMMODITY	TOTAL BUDGET (R)
District Municipality: UMkhanyakude Local Municipality: Mtubatuba Co-ordinates: S 28° 25' 22" E 32° 05' 24"	Total no. of beneficiaries:3 No. of Youth:3 No. of Women: 2 No. of PWD:0	Total no. of jobs created: Permanent: 3 Seasonal:	Piggery	R 2 300 000

BUDGET:	PLANNED ACTIVITIES	ACTIVITIES IMPLEMENTED IN 2019/20	PROJECT STATUS
Voted Funds Budget Approved: R 2 300 000	Planned Activities: <ul style="list-style-type: none"> Pig housing and pens and equipment Handling facility Slurry dam Fencing 0,6 km Borehole Earthworks Production inputs 	<ul style="list-style-type: none"> Pig housing and pens and equipment @R 1 300 000.00 Handling facility @R 50 000.00 Slurry dam @R 100 000.00 Fencing 0,6 km @R 60 000.00 Borehole @R 200 000.00 Earthworks @R 30 000.00 Production inputs @R560 000.00 	Not operational Due to FMD outbreak that led to movement restrictions, abattoirs could not take animals from the District. Farmers could not sustain project as feed costs escalated as they had to only market their pigs locally

KHANYAKUDE-PIGGERY





BUMBANANI MANTIMANDE INTERVENTIONS

VEGETABLE PRODUCTION PROJECTS

PROJECT LOCATION	BENEFICIARY ANALYSIS	JOB CREATION	OVERAL ACTIVITIES	TOTAL BUDGET (R)
District Municipality: Uthukela Local Municipality: Alfred Duma Ward: 27 Coordinates: 28° .36' 09.3''S 29° 51' 03.2'' E	Total No. of Beneficiaries: 05 No. of Youth: 2 No. of Woman: 02 No. of People with Disability: 0	Total No. of Jobs Created: 48 Permanent: 08 Temporal Jobs: 40	Construction of storage shed, cold storage Installation of centre pivot irrigation Potato sorting machine and potato harvester 1.2 k Fence and production inputs	R 2 100 100





PROJECT LOCATION	BENEFICIARY ANALYSIS	JOB CREATION	Project Size	TOTAL BUDGET (R)
District Municipality: uGu LM: Umuziwabantu Ward: 10 Coordinates: S30° 41'29.97" E 030° 00'50.79'	Total No. of Beneficiaries:3 No. of Youth: 3 No. of Woman: 02 No. of People with Disability: 0	Total No. of Jobs Created: 9 Permanent: 04 Temporal Jobs: 05	50 Sow Unit	2018/19:R2 000 000 2019/20:R2 000 000 Total Budget :R4 000 000

ACTIVITIES IMPLEMENTED		PROGRESS
CASP Budget R4 000 000 Expenditure R4 000 000	Activities to be Implemented 2018/19 <ul style="list-style-type: none"> Construction of breeder house for a 50 sow unit, purchasing of 10 pregnant sows and a bore, pig feed, equipment and medication Activities to be Implemented 2019/20 <ul style="list-style-type: none"> Construction of weaner, grower and Finisher unit and Equipment, purchasing of 10 F1 Gilt (Large White &S.A. Landrace) Hybrid/cross and 1 boar, feed and medication 	<ul style="list-style-type: none"> All planned activities for 2018/19 and 2019/20 were completed within set period completed. The project savings of R145 467.44 was to install a borehole to ensure constant supply of water.





HAMASHE FARMING AND TRADING INTERVENTION

VEGETABLE PRODUCTION PROJECTS

PROJECT LOCATION	BENEFICIARY ANALYSIS	JOB CREATION	OVERAL ACTIVITIES	TOTAL BUDGET (R)
District Municipality: Ethekwini Local Municipality: Umbubmulu Ward: 96 Coordinates: S 29°58'41.7" : E30°45'43.1"	Total No. of Beneficiaries:01 No. of Youth: 0 No. of Woman: 0 No. of People with Disability: 0	Total No. of Jobs Created: 08 Permanent: 02 Temporal Jobs: 06	1. Broiler 4000 houses & VIP toilets 2. Fencing 3. Storage container 4. Production inputs 5. Access road	R3 000 000





BARO Farmers Agricultural Cooperative

ILEMBE-VEGETABLES

PROJECT LOCATION	BENEFICIARY ANALYSIS	JOB CREATION	PROJECT SIZE	TOTAL BUDGET (R)
District Municipality: iLembe Local Municipality: KwaDukuza Ward: 2 S29° 28' 38,28'' E31° 14' 11''	Total No. of Beneficiaries: 05 No. of Youth: 0 No. of Woman: 01 No. of People with Disability: 0	Total No. of Jobs Created: 03 Permanent: 02 Temporal Jobs: 01	05 tunnel	R719 000,00

ACTIVITIES IMPLEMENTED IN 20219/20

CASP Budget 2020/21
R719 000,00

Total expenditure:
R719 000,00

2019/20 Financial Year:

Construction and installation of five (5) greenhouse tunnels with irrigation and horticultural equipment, and purchase of tomato seedlings

Project status

- Project not functional
- A borehole need rehabilitation and construct a proper packhouse with a cooling area.





2020/21 PROJECTS



ZWIDE BROTHERS/ MTIMONA FARM

KING CETSWAYO-POULTRY

PROJECT LOCATION	BENEFICIARY ANALYSIS	JOB CREATION	TOTAL BUDGET (R)
District Municipality: KING CETSHWAYO Local Municipality: UMHLATHUZE	Total No. of Beneficiaries: 01 No. of Youth: 0 No. of Woman: 0 No. of People with Disability: 0	Total No. of Jobs Created: 0 Permanent: 0 Seasonal/Temporal Jobs: 0	R 2 000 000

PLANNED PROJECT ACTIVITES 2020/21		PROJECT ACTIVITES IMPLEMENTED	PROJECT STATUS
Supply of 6000 Pullets at a point of lay @R840 000, Feed @ R718 200, Egg trays @ R430 920, House sanitation @R1 680 00	Year Of Implementation: 2020/21	Activities: Procurement of production inputs (layers and feed) Renovated 6000 layer house unit	<ul style="list-style-type: none"> The project is operational The project moved from the farm



PROJECT LOCATION	BENEFICIARY ANALYSIS	JOB CREATION	OVERAL ACTIVITIES	TOTAL BUDGET
District Municipality: Umgungundlovu Local Municipality: Mpofana Coordinates: E 29° 04' 07.8" S 30° 15' 58.0"	Total No. of Beneficiaries: 31 No. of Youth: 11 No. of Woman: 18 No. of People with Disability: 0	Total No. of Jobs Created: 117 Permanent: 9 Seasonal/Temporal Jobs: 108	Yellow Maize: 150 Hectares Vegetables: 12 hectares Popcorn: 120 hectares Potatoes: 10 Hectares	R 3 564 625,00

Activities Implemented in 2019/20	2020/21	Markets
Budget: R1 0223 000,00 Centre Pivot repairs Purchased Production inputs	Budget: R 2 541 625,00 Irrigation system repairs Purchased production inputs Cold-room repairs Potato sorter repairs Purchased Potato lifter	Supplies the Pietermaritzburg and eThekweni Fresh Produce Markets





INQABESHI PROJECT

PROJECT LOCATION	BENEFICIARY ANALYSIS	JOB CREATION	COMMODITY	TOTAL BUDGET (R)
District Municipality: UMkhanyakude Local Municipality: Mtubatuba Co-ordinates: S 28.335114 E 32.1098366	Total no. of beneficiaries: 3 No. of Youth: 0 No. of Women: 2 No. of PWD:0	Total no. of jobs created: Permanent: 3 Seasonal:	Beef Feedlot	R 4 600 000

BUDGET:	ACTIVITIES IMPLEMENTED IN 2019/20	ACTIVITIES IMPLEMENTED IN 2020/21	PROJECT STATUS
Voted Funds Budget Approved: R 4 600 000	Tractor with front end loader and mixer @R 1 400 000.00 Construction for handling facility @R 150 000.00 Construction for storage facility @R 500 000.00 Construction of holding pens @R 480 000 Drilling and equip borehole @R 200 000 Weaners @R 1 400 000.00	Feed Ingredients @R 300 000.00 Medicines and vaccines @R 20 000	Not operational Project affected by FMD outbreak and movement restrictions led to halt in operations. High feed demand and high feed Costs and lack of formal markets led to non-functionality of the project

UMKHANYAKUDE-BEEF





SINEKHONO POULTRY FARMING

PROJECT LOCATION	BENEFICIARY ANALYSIS	JOB CREATION	Project Size	TOTAL BUDGET (R)
District Municipality: uGu LM: Ray Nkonyeni Ward: 09 Coordinates: S30 56'11.8" E30 14' 56.5"	Total No. of Beneficiaries:3 No. of Youth: 2 No. of Woman: 02 No. of People with Disability: 0	Total No. of Jobs Created: 5 Permanent: 03 Temporal Jobs: 02	2x 1000 broiler units	2019/20:R750 000 2020/21:R1 000 000 Total Budget :R1 750 000
ACTIVITIES IMPLEMENTED			PROGRESS	
CASP Budget R1 750 000 Expenditure R1 750 000	Activities to be Implemented 2019/20 <ul style="list-style-type: none"> Site establishment, Site clearing, Building 1000x1 broiler houses, Purchase of Feed, Purchase of Chicks and Purchase of equipment. Activities to be Implemented 2020/21 <ul style="list-style-type: none"> Construction of 2nd Broiler Structure and Pit, Feed and bedding, feed and medication, electricity tubing and fencing. 		<ul style="list-style-type: none"> All planned activities for 2019/20 and 2020/21 were completed within set period completed. The project savings of R145 467.44 was to install a borehole to ensure constant supply of water. 	





HT PROJECT

PROJECT LOCATION	BENEFICIARY ANALYSIS	JOB CREATION	COMMODITY	TOTAL BUDGET (R)
District Municipality: UMkhanyakude Local Municipality: Mtubatuba Co-ordinates: S 28° 30' 11.06" E 32° 10' 39.01"	Total no. of beneficiaries: 1 No. of Youth: 0 No. of Women: 1 No. of PWD:0	Total no. of jobs created: Permanent: 2 Seasonal: 0	Piggery	R 3 950 000

BUDGET:	PLANNED ACTIVITIES	ACTIVITIES IMPLEMENTED IN 2019/20	ACTIVITIES IMPLEMENTED IN 2020/21	PROJECT STATUS
Voted Funds Budget Approved: R 3 950 000	Construction of piggery house (farrowing, weaner and grower houses). Equipment for breeding house.. Construction of handling facility. Purchase of breeding stock. Purchase of feed. Purchase of vaccines and medicines.	Purchase of piggery structures @ R800 000.00 Drill and equip borehole @R 200 000.00	Equipment of piggery house and construction @R 1 600 000.00 Construction of manure pit @R 600 000.00 Purchase of breeding stock @R240 000.00 Purchase of feed @R290 000 Purchase of vaccines and medicines @R20 000.00	Non-functional FMD outbreak & movement restrictions. Abattoirs could not take animals from the District. Farmers could not sustain project as feed costs escalated as they had to only market their pigs locally

UMKHANYAKUDE-PIGGERY





ZIYAGEZANA LAYERS

PROJECT LOCATION	BENEFICIARY ANALYSIS	JOB CREATION	TOTAL BUDGET (R)
District Municipality: KING CETSHWAYO Local Municipality: UMHLATHUZE	Total No. of Beneficiaries: 09 No. of Youth: 03 No. of Woman: 05 No. of People with Disability: 0	Total No. of Jobs Created: 0 Permanent: 0 Seasonal/Temporal Jobs: 0	R 1 498 000

PLANNED PROJECT ACTIVITES (2019/20) & 2020/21	PROJECT ACTIVITES IMPLEMENTED	PROJECT STATUS
Activities: Construction of 1 X 1000 layer unit, @ R 805 581 & purchase of production inputs, @R 692 419	<ul style="list-style-type: none"> Activities: Construction of the layer house, provision of equipment Production inputs delivered 100% complete 	Expenditure Budget: R 1 498 000 Year Of Implementation: 2020/21 <ul style="list-style-type: none"> The project is non operational Misuse of funds and failure to sustain the projects





MSONOTHO LAYERS

PROJECT LOCATION	BENEFICIARY ANALYSIS	JOB CREATION	TOTAL BUDGET (R)
District Municipality: KING CETSHWAYO Local Municipality: MTHONJANENI	Total No. of Beneficiaries: 01 No. of Youth: 0 No. of Woman: 0 No. of People with Disability: 0	Total No. of Jobs Created: 0 Permanent: 0 Seasonal/Temporal Jobs: 0	R 2 796 030

PLANNED PROJECT ACTIVITES (2020/21)	PROJECT ACTIVITES IMPLEMENTED	PROJECT STATUS
Activities: Construction of 2 X 1000 layer units @ R 1 784 000, 0,6 km fencing @ R 60 000, pack house @ R 200 000, and purchase of production inputs @ R 680 030	Activities: No activities implemented so far, submitted. Tranche received on 22/09/2020 - PSC appointed Service Provider on the 21/09/2020. 100% complete	Expenditure Budget: R2 796 030 • The project is operational



KCD-LAYERS



CONFLUENCE FARM

PROJECT LOCATION	BENEFICIARY ANALYSIS	JOB CREATION	TOTAL BUDGET (R)
District Municipality: KING CETSHWAYO Local Municipality: UMHLATHUZE	Total No. of Beneficiaries: 01 No. of Youth: 0 No. of Woman: 0 No. of People with Disability: 0	Total No. of Jobs Created: 05 Permanent: 02 Seasonal/Temporal Jobs: 05	R 3 850 000
PLANNED PROJECT ACTIVITES (2019/20) & 2020/21	PROJECT ACTIVITES IMPLEMENTED		PROJECT STATUS
Activities: Construction of Storage facility @ R500 000, feedlot handling facilities@R600 000, procurement of tractor with combo mixer@ R1 250 000, Weaners @R 1 200 000 feed ingredients @ R240 000 veterinary costs @ R 60 000	Year Of Implementation : 2019/20 & 2020/21	<ul style="list-style-type: none"> Storage facility, tractor with combo mixer, handling facilities. Weaners, feed ingredients and medicines still to be procured. 100% complete 	Expenditure Budget: R 3 850 000 Year Of Implementation: 2019/20 and 2020/21 <ul style="list-style-type: none"> The project is operational

KCD-BEEF





GUMEDE FAMILY PROJECT

KING CETSWAYO-GOATS

PROJECT LOCATION	BENEFICIARY ANALYSIS	JOB CREATION	TOTAL BUDGET (R)
District Municipality: KING CETSHWAYO Local Municipality: MTHONJANENI	Total No. of Beneficiaries: 02 No. of Youth: 0 No. of Woman: 01 No. of People with Disability: 0	Total No. of Jobs Created: 0 Permanent: 0 Seasonal/Temporal Jobs: 0	R 440 708

PLANNED PROJECT ACTIVITES (2020/21)		PROJECT ACTIVITES IMPLEMENTED	PROJECT STATUS
Construction of animal handling facilities @ R200 000, Drilling and equipping of borehole @ R300 000	Year Of Implementation: 2020/21	Activities: Construction of animal handling facilities, Drilling and equipping of borehole. Project 100% complete	Expenditure Budget: R440,708 <ul style="list-style-type: none"> The project is operational





ISIGAWULI LAYERS

PROJECT LOCATION		BENEFICIARY ANALYSIS	JOB CREATION	TOTAL BUDGET (R)
District Municipality: KING CETSHWAYO Local Municipality: UMFOLOZI		Total No. of Beneficiaries: 01 No. of Youth: 01 No. of Woman: 01 No. of People with Disability: 01	Total No. of Jobs Created: 09 Permanent: 0 Seasonal/Temporal Jobs: 09	R 3 140 000
PLANNED PROJECT ACTIVITES (2019/20) & (2020/21)		PROJECT ACTIVITES IMPLEMENTED		PROJECT STATUS
Activities: Construction of 2 X 1000 layer units @ R1600 000 , drilling of borehole @R 350 000, 0,6 km fencing @ R 60 000, abluion facility, pack house@ R200 000, production inputs & equipment @ R829 999		Year Of Implementation: 2019/20 and 2020/21 Activities: 2 X layer units, borehole, abluion facility, pack house, fencing. Production inputs to be purchased after the completion of the structure. Project is at 100% completion	Expenditure Budget: R 2 140 000 Year Of Implementation: 2020/21	<ul style="list-style-type: none"> The project is operational not to its full capacity since it was extended by the farmer

KCD-LAYERS





QALAKAHLE PROJECT

PROJECT LOCATION	BENEFICIARY ANALYSIS	JOB CREATION	COMMODITY	TOTAL BUDGET (R)
District Municipality: UMkhanyakude Local Municipality: Mtubatuba Co-ordinates: S 28° 26' 29.26" E 32° 11' 32.34"	Total no. of beneficiaries:1 No. of Youth:0 No. of Women: 0 No. of PWD:0	Total no. of jobs created: Permanent: 27 Seasonal: 30	Vegetable	R 3 900 000

BUDGET:	ACTIVITIES IMPLEMENTED IN 2019/20	ACTIVITIES IMPLEMENTED IN 2020/21	PROJECT STATUS
Voted Funds Budget Approved: R 3 900 000	: Erection of 10 fully galvanised tunnels@ R1 100 000 Installation of Irrigation system @R200 00, Installation of Storeroom Refrigeration @ R400 000, Construction of storage facility @ R400 000, electricity installation@R100 000, Construction of Ablution Facility@R150 000, procurement of production inputs @ R650 000	Production inputs and packaging tools @R 650 000.00	In operation





Sofoco Gehazi Fish Farming Cooperative LTD

PROJECT LOCATION	BENEFICIARY ANALYSIS	JOB CREATION	PROJECT SIZE	TOTAL BUDGET (R)
District Municipality: iLembe Local Municipality: Mandeni Coordinate: S29°04'47,90" E31°38'7,9" Ward :1	Total No. of Beneficiaries: 5 No. of Youth: 0 No. of Woman: 03 No. of Persons with Disability:0	Total No. of Jobs Created:2 Permanent : Seasonal/Temporal Jobs: 2	1ha	R500 000,00

ACTIVITIES IMPLEMENTED IN 2020/21

CASP Budget 2020/21	Implemented Activities	Project status
R 500 000,00 Total expenditure: R500 000,00	<ul style="list-style-type: none"> ▪ Rehabilitation of two tunnels, replacement of two main doors and purchase of water pump. 	<ul style="list-style-type: none"> ▪ Towards the end of 2020/21 financial year there was a hailstorm which damaged both tunnels. ▪ Project not functional due to ill-health of the project leader.





Mshibe Hydroponics Pty Ltd

I LEMBE-VEGETABLES

PROJECT LOCATION	BENEFICIARY ANALYSIS	JOB CREATION	PROJECT SIZE	TOTAL BUDGET (R)
District Municipality: iLembe Local Municipality: Mandeni Coordinates: S29° 11'58.20" E 31° 24'54.08" Ward :3	Total No. of Beneficiaries: 1 No. of Youth: 0 No. of Woman: 0 No. of Persons with Disability:0	Total No. of Jobs:0 Created:0 Permanent : 0 Seasonal/Temporal Jobs: 0	6ha	R1 785 000,00

ACTIVITIES IMPLEMENTED IN 2020/21

<p>CASP Budget 2020/21 R 1 785 000,00</p> <p>Total expenditure: R1 521 630</p>	<p>Implemented Activities</p> <ul style="list-style-type: none"> ▪ Site establishment for packhouse ▪ Erection of steel structures, construction of foundation and raise internal and external wall (all building). 	<p>Project status</p> <ul style="list-style-type: none"> ▪ Project not functional ▪ It has been discovered on the 18/08/2021 that the beneficiary misappropriated the project funds and project was handed over to legal section ▪ Furthermore, the farmer had some challenges in servicing Ithala Loan
--	--	---





Bongi-Mpumelelo (PTY) Ltd

PROJECT LOCATION	BENEFICIARY ANALYSIS	JOB CREATION	PROJECT SIZE	TOTAL BUDGET (R)
District Municipality: iLembe Local Municipality: KwaDukuza Coordinates: S29°13'30.96"E 31° 17' 00.14' Ward :3	Total No. of Beneficiaries: 1 No. of Youth: 01 No. of Woman: 0 No. of Persons with Disability:0	Total No. of Jobs:0 Created:0 Permanent : 0 Seasonal/Temporal Jobs: 0	120ha	R3 420 860,00

ACTIVITIES IMPLEMENTED IN 2020/21

<p>CASP Budget 2020/21 R 3 420 860,00</p> <p>Total expenditure: R1 110 747.50</p>	<p>Implemented Activities</p> <ul style="list-style-type: none"> ▪ Bush clearing ▪ Construction of the farm road 	<p>Project status</p> <ul style="list-style-type: none"> ▪ Project not functional ▪ The project was handed over to Legal Services and was further handed over to State Attorneys with the intention to recover funds. ▪ The farmer had promised to pay back the money, but no actual payments to date.
---	---	--





DUMAIN PIGGERY PROJECT

PROJECT LOCATION	BENEFICIARY ANALYSIS	JOB CREATION	OVERAL ACTIVITIES	TOTAL BUDGET
District Municipality: Umzinyathi Local Municipality: Endumeni Coordinates: S28° 07' 35" E30° 09' 58"	Total No. of Beneficiaries: No. of Youth:01 No. of Woman:02 No. of People with Disability:0	Total No. of Jobs Created: Permanent:03 Seasonal/Temporal Jobs: 07	<ul style="list-style-type: none"> • 20 sows • Packaging material for meat 	R2 300 000

Budget 2020/21	Activities Implemented in 2020/21	Project Status
R2,3 million	Activities: 2 Piggery Houses Borehole drilling Procured 20 sows	Functional

UMZINYATHI-PIGGERY





Nkonyane Agricultural Primary Co-op

UMZINYATHI-PIGGERY

PROJECT LOCATION	BENEFICIARY ANALYSIS	JOB CREATION	TOTAL BUDGET (R)
District Municipality: UMzinyathi Local Municipality: Umsinga Coordinates: : S 280 53' 28" E 300 25' 14"	Total No. of Beneficiaries:5 No. of Youth: 4 No. of Woman: 2 No. of People with Disability: 0	Total No. of Jobs Created:11 Permanent: 0 Seasonal/Temporal Jobs: 11	R 4 200 000.00

ACTIVITES IMPLEMENTED 2020/21	BUDGET	PROJECT STATUS
Activities: Construction of 3 pig structures , Equipping structures, procure pigs, procure feed, construct slurry dam, fencing	Expenditure R4 200 000,00	<ul style="list-style-type: none"> Project is 100% complete





Benzeleni Layer Primary Cooperative

ILEMBE-LAYERS

PROJECT LOCATION	BENEFICIARY ANALYSIS	JOB CREATION	PROJECT SIZE	TOTAL BUDGET (R)
District Municipality: iLembe Local Municipality: KwaDukuza Coordinates: S29°24'02.6" E31°17'19.7" Ward :12	Total No. of Beneficiaries: 5 No. of Youth: 0 No. of Woman: 01 No. of Persons with Disability: 0 4	Total No. of Jobs Created: 10 Permanent : 5 Seasonal/Temporal Jobs: 5	1000 layer units	R3 800 000.00

ACTIVITIES IMPLEMENTED IN 2020/21

CASP Budget 2020/21

R 2 000 000,00

Total expenditure:

R2 000 000,00

CASP Budget 2021/22

R1 800 000,00

Total Expenditure

R1 800 000,00

Implemented Activities 2020/21

- Construction of 1000 layers with sorting shed & Ablution facilities

Implemented activities 2021/22

- Construction of Pack Shed with cold room.

Project status

- The project is currently not functional due to the fact that project members struggled to buy new stock and production inputs





2021/22 PROJECTS



PROJECT LOCATION	BENEFICIARY ANALYSIS	JOB CREATION	PROJECT SIZE	TOTAL BUDGET (R)
District Municipality: iLembe Local Municipality: KwaDukuza Coordinates: S29 15' 29." E31 13' 16.3" Ward :27	Total No. of Beneficiaries: 5 No. of Youth: 02 No. of Woman: 02 No. of Persons with Disability:0	Total No. of Jobs Created:5 Permanent : 0 Seasonal/Temporal Jobs: 5	50 sow unit	R5 570 000,00

ACTIVITIES IMPLEMENTED IN 2019/20-2021/22

CASP Budget 2019/20	Implemented Activities :2019/20	Project status
R1 200 000,00 <u>19/20 Total expenditure:</u> R1 200 000,00 <u>CASP Budget 2020/21</u> R2 800 000,00 <u>20/21 Total Expenditure</u> R2 800 000,00 <u>CASP Budget 2021/22</u> R1 570 000,00 <u>21/22 Total Expenditure</u> R1 570 000,00	<u>Implemented activities: 2020/21</u> <ul style="list-style-type: none"> ▪ Construction of 3 buildings ▪ Construction of the slurry dam. ▪ Electrical connections and reticulation <u>Implemented activities : 2021/22</u> <ul style="list-style-type: none"> ▪ Completion of 3rd building, Sow and Boar breeding house ▪ Purchase of livestock (50 breeding Gilts, 2 boars) ▪ Feed (3 months' Supply) and Medicine (provision for 3 months) 	Project is functional



PROJECT LOCATION	BENEFICIARY ANALYSIS	JOB CREATION	PROJECT SIZE	TOTAL BUDGET (R)
District Municipality: iLembe Local Municipality: Maphumulo Coordinates: S29° 12'24 "E31°02'05 Ward :2,5,6,8,10 & 11	Total No. of Beneficiaries: 22 No. of Youth: 05 No. of Woman: 13 No. of Persons with Disability:01	Total No. of Jobs Created:5 Permanent : 0 Seasonal/Temporal Jobs:5	44ha	R2 440 000,00

ACTIVITIES IMPLEMENTED IN 2020/21 & 2021/22

CASP Budget 2020/21

R 1 400 000,00

Total expenditure:

R1 000 000,00

CASP Budget 2021/22

R1 000 000,00

Total expenditure:

R1 000 000,00

Implemented Activities :2020/21

- Fencing of 10km out of 13.2km

Implemented activities: 2021/22

- Purchase of Avocado Seedlings
- Production inputs (fertilizer and chemicals)

Project status

Project is functional however, fencing was not completed due to issues with the service provider who failed to complete the project.





UBUNTUBETHU EGGS

PROJECT LOCATION	BENEFICIARY ANALYSIS	JOB CREATION	Project Size	TOTAL BUDGET (R)
District Municipality: uGu LM: Umzumbe Ward: 12 Coordinates: S27° 49' 46.56" E30° 28' 55.86"	Total No. of Beneficiaries:1 No. of Youth: 1 No. of Woman: 0 No. of People with Disability: 0	Total No. of Jobs Created: 5 Permanent: 01 Temporal Jobs: 04	2000 Layer unit	2020/21:R1 000 000 2021/22:R1 300 000 Total budget : R2 300 000

ACTIVITIES IMPLEMENTED	PROGRESS
<p>CASP Budget R2 300 000</p> <p>Expenditure R2 300 000</p> <p>Activities to be Implemented in 2020/21</p> <ul style="list-style-type: none"> • Site establishment, Site clearing and building of 2000 layer house. <p>Activities to be Implemented in 2021/22</p> <ul style="list-style-type: none"> • Installation of a battery cage system with all equipment • Purchasing of 2000 Pullets • Purchasing of Layer Feed • Purchasing of Medication and detergents • Purchasing of Branding material • Purchasing of Packaging material 	<ul style="list-style-type: none"> • Planned activities for both 2020/21 and 2021/22 were all completed in full. • Being forced by market demands, the farmer expanded a 2000 layer unit to 4000 layer units from farm proceeds. • There is a potential of further expansion to 8000 layer unit.



LAKE ATHABASCA CANADA

Latitude 30°28'41,222"S Longitude 30°29'49,652"E

LOCAL 10:29:25 GMT 08:29:25 TUESDAY 16:11:2021 ALTITUDE 114 METER

Sqeqeshiwe primary cooperative

PROJECT LOCATION	BENEFICIARY ANALYSIS	JOB CREATION	PROJECT SIZE	TOTAL BUDGET (R)
District Municipality: iLembe Local Municipality: Maphumulo Coordinates: S29°08'47"E31°01'01 Ward :11	Total No. of Beneficiaries: 5 No. of Youth: 02 No. of Woman: 05 No. of Persons with Disability:01	Total No. of Jobs Created:3 Permanent : 0 Seasonal/Temporal Jobs:3	2000 layer unit	R2 417 183,30

ACTIVITIES IMPLEMENTED IN 2020/21-2021/22

<p><u>CASP Budget 2020/21</u> R1 783 583,30 <u>Total expenditure:</u> R1 783 583,30</p> <p><u>CASP Budget 2021/22</u> R633 600,00 <u>Total Expenditure</u> R633 600,00</p>	<p><u>Implemented Activities :2020/21</u></p> <ul style="list-style-type: none"> Construction of a layer unit structure with equipment. <p><u>Implemented activities: 2021/22</u></p> <ul style="list-style-type: none"> Purchase of 2000 pullets (20-week old) Purchase of feed 1680 x 50kg bags 	<p>Project status Project is functional</p>
--	--	--





AMANDLENTUTHUKO PROJECT

PROJECT LOCATION	BENEFICIARY ANALYSIS	JOB CREATION	COMMODITY	TOTAL BUDGET (R)
District Municipality: UMkhanyakude Local Municipality: Mtubatuba Co-ordinates: S28 ,206246 E32, 635412	Total no. of beneficiaries:07 No. of Youth:0 No. of Women: 01 No. of PWD:00	Total no. of jobs created:07 Permanent:07 Seasonal:0	Red Meat	R4 000 000.00

PLANNED ACTIVITIES	ACTIVITIES IMPLEMENTED IN 2019/2020	ACTIVITIES IMPLEMENTED IN 2020/2021	PROJECT STATUES
Voted Funds Budget Approved First Tranche Budget: R1 500 000.00 Second Tranche Budget: R 2 500 000.00	<ul style="list-style-type: none"> Storage facility @R 500 000.00 Holding Pens @R 80 000.00 Handling Facility @R140 000.00 Drill and equip borehole R200 000 Purchase of weaners Purchase of feed @R 70 000.00 	<ul style="list-style-type: none"> Purchase tractor @R 1 400 000.00 Purchase of weaners @R 480 000.00 Feed ingredient @ R24 000.00 Vaccine and medicine @ R20 000.00 	Not operational There were social issues which threatened the project FMD outbreak and movement restrictions led to the halt of the project activities . Abattoirs could not take animals from the affected Districts.

UMKHANYAKUDE-BEEF



LAT: 28°18'10" S
 LONG: 32°17'26" E
 P495, Myeki, South Africa, KwaZulu-Natal
 South Africa



SIZANANI MAZULU PIGGERY

KING CETSWAYO-PIGGERY

PROJECT LOCATION	BENEFICIARY ANALYSIS	JOB CREATION	TOTAL BUDGET (R)
District Municipality: KING CETSHWAYO Local Municipality: UMLALAZI	Total No. of Beneficiaries: 05 No. of Youth: 05 No. of Woman: 02 No. of People with Disability: 0	Total No. of Jobs Created: 0 Permanent: 0 Seasonal/Temporal Jobs: 0	R 3 962 680

PLANNED PROJECT ACTIVITES 2020/21/22/23		PROJECT ACTIVITES IMPLEMENTED	PROJECT STATUS
Construction of 40 sow unit @ R 2 600 000, manure pit @ R200 000, Handling facility @ R50 000, Borehole @ R200 000, Breeding stock R400 000, Feed @ R480 680 and veterinary costs @ R32 000	Year Of Implementation: 2020/21 and 2021/22	Activities: Construction of 40 sow unit manure pit, Handling facility, EIA Borehole, Breeding stock, Feed and veterinary medicines, project 100% complete	<ul style="list-style-type: none"> The project is operational





REAL QUICK LAYERS

PROJECT LOCATION	BENEFICIARY ANALYSIS	JOB CREATION	Project Size	TOTAL BUDGET (R)
District Municipality: uGu LM: Ray Nkonyeni Ward: 25 Coordinates: S30°47'33.81E30°18'32.20	Total No. of Beneficiaries:1 No. of Youth: 1 No. of Woman: 0 No. of People with Disability: 0	Total No. of Jobs Created: 10 Permanent: 07 Temporal Jobs: 03	4000 Layer unit	2019/20:R2 100 000 2020/21:R2 766 080 Total budget : R4 866 080
ACTIVITIES IMPLEMENTED			PROGRESS	
CASP Budget R4 866 080 Expenditure R4 866 080	Activities to be Implemented in Year 1 <ul style="list-style-type: none"> Site establishment, Site clearing, Building of 4000 layer house, supply and equipping of laying cages and fencing of 1.78km boundary fence. Activities to be Implemented in Year 2 <ul style="list-style-type: none"> Construction of access road, borehole installation and equipping, Supply of 18 weeks point of lay Pullets, Supply of Layer feed for a period of 4 months, Grading& wrapping machine, Supply of medication and cleaning detergents 		<ul style="list-style-type: none"> Planned activities for Year 1 were all completed in full. The planned activities for the 2nd were also completed. The project has managed to create 7 permanent employees, casuals and 1 qualified animal scientist. The project was handed over. 	





PROJECT LOCATION	BENEFICIARY ANALYSIS	JOB CREATION	OVERAL ACTIVITIES	TOTAL BUDGET (R)
District Municipality: Harry Gwala Local Municipality: Greater Kokstad Ward: 02 Coordinates: S30°04'27".51 E 29°09'12".60	Total No. of Beneficiaries:02 No. of Youth: 0 No. of Woman: 01 No. of People with Disability: 0	Total No. of Jobs Created: 48 Permanent: 08 Temporal Jobs: 40	Construction of storage shed, cold storage Installation of centre pivot irrigation Potato sorting machine and potato harvester	R4 100 000

ACTIVITIES IMPLEMENTED IN 2021/22		MARKETS AND ACHIEVEMENTS	
CASP Budget Approved R4100 000	Activities Implemented -Construction of storage shed, -cold storage, -Installation of centre pivot irrigation, -Potato sorting machine and potato harvester.	Markets: The farmer sells both Seed potatoes and table potatoes Table potatoes sold to First Potato Dynamics in Cape Town and PMB market Growing seed potatoes for MC Cain foods Maize: supply PSPin Kokstad who export to Mexico and manufacture cattle feed	Achievements: Obtaining marketing contracts from MC CAIN and First potato dynamics Full GAP certification





ESIDLEKENI POULTRY FARMING CO-OPERATIVE

PROJECT LOCATION	BENEFICIARY ANALYSIS	JOB CREATION	OVERAL ACTIVITIES	TOTAL BUDGET
District Municipality: Umzinyathi Local Municipality: Nquthu Coordinates: S 30°24'33.45" : E29°24'33.45"	Total No. of Beneficiaries: 5 No. of Youth: 3 No. of Woman: 3 No. of People with Disability: 0	Total No. of Jobs Created: 3 Permanent: 2 Seasonal/Temporal Jobs: 1	1000 layers	R2 800 000,00

Activities Planned	2021/22	Expenditure
Budget: R 2 800 000,00 1. Construction of new layer structure 2. Purchasing of inputs 3. Water Supply (Drilling of borehole)	Activities: 1. Construction of 1000 layer structure 2. Procure production inputs 3. Drill and equip borehole	Project is complete R 2 800 000,00

UMZINYATHI-LAYERS





PROJECT LOCATION	BENEFICIARY ANALYSIS	JOB CREATION	PROJECT SIZE	TOTAL BUDGET (R)
District Municipality: iLembe Local Municipality: KwaDukuza Coordinates: S29 15' 29." E31 13' 16.3" Ward :27	Total No. of Beneficiaries: 5 No. of Youth: 02 No. of Woman: 02 No. of Persons with Disability:0	Total No. of Jobs Created:5 Permanent : 0 Seasonal/Temporal Jobs: 5	50 sow unit	R5 570 000,00

ACTIVITIES IMPLEMENTED IN 2019/20-2021/22

CASP Budget 2019/20	Implemented Activities :2019/20	Project status
R1 200 000,00 19/20 Total expenditure: R1 200 000,00 CASP Budget 2020/21 R2 800 000,00 20/21 Total Expenditure R2 800 000,00 CASP Budget 2021/22 R1 570 000,00 21/22 Total Expenditure R1 570 000,00	Site levelling and Construction of a steel structures for 3 buildings Implemented activities: 2020/21 <ul style="list-style-type: none"> ▪ Construction of 3 buildings ▪ Construction of the slurry dam. ▪ Electrical connections and reticulation Implemented activities : 2021/22 <ul style="list-style-type: none"> ▪ Completion of 3rd building, Sow and Boar breeding house ▪ Purchase of livestock (50 breeding Gilts, 2 boars) ▪ Feed (3 months' Supply) and Medicine (provision for 3 months) 	Project is functional



Mandalay farm agricultural primary cooperative limited

I L E M B E D M





JABULA ZONDI

PROJECT LOCATION	BENEFICIARY ANALYSIS	JOB CREATION	TOTAL BUDGET (R)
District Municipality: Umzinyathi Local Municipality: Umvoti Coordinates: S 28°55'57.58" : E30°44'27.18"	Total No. of Beneficiaries:2 No. of Youth: 0 No. of Woman: 1 No. of People with Disability: 0	Total No. of Jobs Created Seasonal/Temporal Jobs: 5	R2 000 000,00
PROJECT ACTIVITES IMPLEMENTED 2021/22		PROJECT STATUS	
Activities: 7.3km boundary fence complete, procured 45 cattle, 70 goats, rehabilitation of reservoir, and borehole complete and new crush pan. Procured bailer, trailer and fire extinguisher		Expenditure R2000 000,00 The project is 100% complete	

UMZINYATHI-BEEF





2022/23 PROJECTS



PROJECT LOCATION	BENEFICIARY ANALYSIS	JOB CREATION	PROJECT SIZE	TOTAL BUDGET (R)
District Municipality: Zululand Local Municipality: Big five Hlabisa Coordinates: S 27°54'44.1" E32°12'39.8"	Total No. of Beneficiaries:01 No. of Youth: 0 No. of Woman: 0 No. of People with Disability: 0	Total No. of Jobs Created: Permanent: 28 Seasonal/Temporal Jobs: 10	100 Cattle	R4 619 500,00

Activities Implemented in 2021/22		Activities Implemented in 2022/23	
CASP Budget Approved R1 462 500	Activities Implemented Erection of camp division and boundary fence(19.5km) @ R1 462 500,00	CASP Budget 2022/23 R3 157 000	Activities Implemented 1. Purchase of 4 Breeding Bulls @ R240 000.00, 2. Purchase of Breeding Heifers @ R 1 850 000.00, 3. Scooping of Dam @ R295 000.00 , 4. Construction of Handling Facility @ R175 000.00 , 5. Purchasing of Tractor @ R580 000.00 and 6. Purchasing of medication & vaccine @ R17 000.00



PROJECT LOCATION	BENEFICIARY ANALYSIS	JOB CREATION	PROJECT SIZE	TOTAL BUDGET (R)
District Municipality: Amajuba Local Municipality: Dannhauser Coordinates: S28° 08' 02." E29°58 '41"	Total No. of Beneficiaries: 1 No. of Youth: 0 No. of Woman: 0 No. of People with Disability: 0	Total No. of Jobs Created: 30 Permanent: 30 Seasonal/Temporal Jobs: 00	4000 cattle feedlot	R13 800 000

Activities Implemented in 2021/22		Activities Implemented in 2022/23	
CASP Budget 2021/22 R7 500 000	Activities Implemented 40 x holding pens @ R 4 800 000, 1x 150KW tractor @ R 1 350 000, 2x feeder wagons @ R 1 350 000.	CASP Budget 2022/23 R6 300 000	Activities Implemented <ol style="list-style-type: none"> 1. Purchase of TLB to Clean Kraals @ R1 100 000, 2. Electronic Tagging System @ R 100 000, 3. Weigh Bridge @ R 500 000, 4. Purchase of 150 Weaners at R 10 000 each @ R 1 200 000, 5. Purchase of Feed Ingredients @ R800 000, 6. Ablution Facilities and Feedlot Offices @ R500 000 and 7. Construction of 300 000 Litre Reservoir Including Piping (inlet, outlet & overflow) @ R550 000, 8. Stationery feed mixer @ R1 500 000, 9. Medication and vaccine @ R50 000.

AMAJUBA-BEEF





KARABOS ENTERPRISE

PROJECT LOCATION	BENEFICIARY ANALYSIS	JOB CREATION	PROJECT SIZE	TOTAL BUDGET (R)
District Municipality: UMzinyathi Local Municipality: Endumeni Coordinates: S 30°26'05" : E28° 14' 51"	Total No. of Beneficiaries:01 No. of Youth: 01 No. of Woman: 0 No. of People with Disability:10	Total No. of Jobs Created: Permanent: 10 Seasonal/Temporal Jobs: 15	200 Cattle	R10 900 000

Activities Implemented in 2021/22		Activities Implemented in 2022/23	
CASP Budget Approved R7 450 000	Activities Implemented 200x Breeding cows 6x breeding bulls supplement licks vaccine & medication and horse and trailer truck with cattle carrier trailer	CASP Budget 2022/23 R3 450 000	Activities Implemented 1. Purchase of 100KW tractor @ R940 000.00; 2. cattle trailer @ R 200 000.00; 3. 75x breeding beef master heifers @ R 1 500 000,00; 4. 3x beef master bulls R 240 000.00; 5. Purchase of vaccine & medication @ R 10 000.00; 6. calf puller @ R 30 000.00, 7. supplements (winter & summer licks)@ R 110 000 and 8. 5000 Litres trailer fire fighters @ R 420 000.

UMZINYATHI-BEEF





UMDIKIZO TRADING PROJECT

PROJECT LOCATION	BENEFICIARY ANALYSIS	JOB CREATION	PROJECT SIZE	TOTAL BUDGET (R)
District Municipality: Harry Gwala Local Municipality: Greater Kokstad Coordinates: S 30°13'56.51" : E29°11'08.56"	Total No. of Beneficiaries:1 No. of Youth: 0 No. of Woman: 0 No. of People with Disability: 0	Total No. of Jobs Created: Permanent: 1 Seasonal/Temporal Jobs: 7	150 Cattle	R4 690 000

Activities Implemented in 2021/22		Activities Implemented in 2022/23	
CASP Budget Approved R2 000 000	Activities Implemented 5 kilometers of fencing. Purchase of pregnant heifers and bulls.	CASP Budget 2022/23 R2 690 000	Activities Implemented <ol style="list-style-type: none"> 1. Purchase of Tractor 61kw @R700 000, 2. Cattle scale R100 000, 3. Handling Facility R200 000. 4. 55 Bonsmara heifers @ R1 210 000. 5. 3 breeding bulls @ R240 000. 6. Medication and vaccines @ R 40 000. 7. Supplementary feed @ R200 000.



HARRY GWALA-BEEF



LRSA TSAR BEEF

HARRY GWALA-BEEF

PROJECT LOCATION	BENEFICIARY ANALYSIS	JOB CREATION	PROJECT SIZE	TOTAL BUDGET (R)
District Municipality: Harry Gwala Local Municipality: Greater Kokstad Coordinates: S 30.244969 : E29.502251	Total No. of Beneficiaries:01 No. of Youth: 0 No. of Woman: 01 No. of People with Disability: 0	Total No. of Jobs Created: Permanent: 7 Seasonal/Temporal Jobs: 2	300 CATTLE	R7 400 000

Activities Implemented in 2021/22		Activities Implemented in 2022/23	
Voted Budget Approved R4 000 000	Activities Implemented Handling Facility Erection of Boundary and internal fence Tractor, Bailer, Slash, Hay rake, cattle scale, winter and summer licks	CASP Budget 2022/23 R3 400 000	Activities Implemented 1. Purchase of 116 breeding stock @R18 500 = R2 146 000, 2. Purchase of 10 breeding bulls @R60 000 = R600 000, 3. Purchase of supplementary feeds = R568 000, 4. Medicines and vaccines with vet kit =R86 000.





CEBOLAKHE PROJECTS PTY LTD

PROJECT LOCATION	BENEFICIARY ANALYSIS	JOB CREATION	PROJECT SIZE	TOTAL BUDGET (R)
District Municipality: Amajuba Local Municipality: Emadlangeni Coordinates: S27° 33 ' 05.2" E30° 19' 41.3"	Total No. of Beneficiaries: 01 No. of Youth: 01 No. of Woman: 0 No. of People with Disability: 0	Total No. of Jobs Created: 04 Permanent: 04 Seasonal/Temporal Jobs: 00	200 CATTLE	R4 000 000

Activities Implemented in 2021/22		Activities Implemented in 2022/23	
CASP Budget Approved	Activities Implemented	CASP Budget 2022/23	Activities To be Implemented
R1 000 000	Purchase of X50 pregnant beef masters Purchase of X2 Bulls beef masters	R3 000 000	1. Purchase of 150 Pregnant Cows @ R 2 700 000 and 2. Purchase of 6 Beef master young Bulls @ R 300 000.

AMAJUBA-BEEF





KPP Piggery

HARRY GWALA-PIGGERY

PROJECT LOCATION	BENEFICIARY ANALYSIS	JOB CREATION	PROJECT SIZE	TOTAL BUDGET (R)
District: Harry Gwala Local: Dr Nkosazana Dlamili-Zuma Ward : 07 Area: Ntuso Farm S29 51' 5134" E 29 41' 3815"	Total of beneficiaries : 1 Total number of women: 1 Total number of youth: 0 Total number of PWD: 0	Permanent jobs : 7 Casual/Temporal Jobs: 0 Graduates placed: 2	200 Sow Unit	9 500 000

Activities Implemented in 2021/20222		Activities Implemented in 2022/23	
CASP BUDGET FOR 2021/2022 : R3 000 000	<ul style="list-style-type: none"> - Earthworks - Erection of steel structures for furrowing/weaner houses - Block work for furrowing/ weaner houses - Erection of steel structures for breeding house 	CASP BUDGET FOR 2022/2023 : R6 500 000	<ul style="list-style-type: none"> - Construction of slurry dam with sewer pipes and sewer pump. - Equipping furrowing/weaner houses - Block work for breeding house - Equipping breeding house





PROJECT LOCATION	BENEFICIARY ANALYSIS	JOB CREATION	PROJECT SIZE	TOTAL BUDGET (R)
District Municipality: Harry Gwala Local Municipality: Dr. NDZ Ward: 10 Coordinates: S 29 43'21,41 E 29,45'14,56"	Total No. of Beneficiaries:02 No. of Youth: 01 No. of Woman: 01 No. of People with Disability: 0	Total No. of Jobs Created: Permanent: 3 Temporal Jobs: 16	250 sow unit	R12 800 000.00

Activities Implemented in 2021/22		Activities Implemented in 2022/23	
CASP Budget Approved R6 500 000	Activities Implemented 1. Erection of steel structures for breeding house - R 3 000 000; block works for breeding house - R1 500 000; Equipping furrowing / weaner house -R 2 000 000	CASP Budget 2022/23 R6 300 000	Activities Implemented 1. Purchase of a 65KW tractor with feed mixer @ R1 000 000, 2. Supply 200 breeding stock @ R 1 800 000, 3. Feed for breeding stock @ R1 766 115, 4. feed for production stock @ R 1233 685, purchase medication, 5. vaccines and fridge @ R 500 200.





STILL MAC

PROJECT LOCATION	BENEFICIARY ANALYSIS	JOB CREATION	PROJECT SIZE	TOTAL BUDGET (R)
District Municipality: UMzinyathi Local Municipality: Endumeni Coordinates: S 30°26'05" : E28° 14' 51"	Total No. of Beneficiaries:01 No. of Youth: 01 No. of Woman: 0 No. of People with Disability: 10	Total No. of Jobs Created: Permanent: 10 Seasonal/Temporal Jobs: 15	200 Cattle	R10 900 000

Activities Implemented In 2021/22		Activities Implemented in 2022/23	
Voted Budget Approved R4 000 000	Activities Implemented 200x Breeding cows 6x breeding bulls supplement licks vaccine & medication and horse and trailer truck double diff with cattle carrier trailer .	CASP Budget 2022/23 R6 900 000	Activities Implemented 1. 100x Purchase of breeding beef master heifers@ R 2 000 000, cattle trailer @ R 200 000, 2. 4x beef master bulls @R 320 000, 3. 103KW tractor 4x4 cab service @R1 100 000, 15 ton truck with cattle rails @R2 000 000, 4. 5000 litres trailer fire fighters@ R 520 000, calf puller 30 000, 5. supplements (winter & summer) @ R 600 000, vaccine and medication @ R130 000.

UMZINYATHI-BEEF





PROJECT LOCATION	BENEFICIARY ANALYSIS	JOB CREATION	Project Size	TOTAL BUDGET (R)
District Municipality: UThukela Local Municipality: Inkosi Langalibalele Ward: 18 Coordinates: S 28° 52' 02,0" E :29° 44' 58,4"S	Total No. of Beneficiaries:1 No. of Youth: 0 No. of Woman: 0 No. of People with Disability: 0	Total No. of Jobs Created: Permanent: 06 Temporal Jobs: 10	1086 ha	R 5 100 000

2021/22	2022/23	Secured Markets
Budget:R2 000 000 Activities: Construction of feedlot structure with feeding troughs, Animal handling facility and holding pens Water provision, Purchase of a tractor and 10ton feed mixer	Budget: R3 100 000 Activities Purchase of 245 weaners, 2 bulls, and 50 in-calves heifers Feed and medication	The project supplies Jacque abattoir in Escourt, and Jackson butcher and local auctions The feedlot is planning to create the market for the weaners produced on the farm and surrounding community





Iscelankobe Project

UMKHANYAKUDE-BEEF

PROJECT LOCATION	BENEFICIARY ANALYSIS	JOB CREATION	TOTAL BUDGET (R)
District Municipality: UMKHANYAKUDE	Total No. of Beneficiaries: 02 No. of Youth: 0 No. of Women: 01 No. of People with Disability: 0	Total No. of Jobs Created: Permanent Jobs: 1	R 4 535 000

ACTIVITIES IMPLEMENTED IN 2021/22		PROJECT STATUS
CASP Budget Approved R 4 535 000	Activities: Erection of 12km fence @R630 000, division of camps @R210 000, ••Drilling of borehole@R250 000, ••Purchase of breeding stock (pregnant heifers) @R2 975 000, Purchase of winter licks@ R50 000 and winter licks @R50 000, Veterinary (Medicines and Vaccines)@R20 000	Non-functional due to FMD





2023/24 PROJECTS



PROJECT LOCATION	BENEFICIARY ANALYSIS	JOB CREATION	PROJECT SIZE	TOTAL BUDGET (R)
District Municipality: Ilembe Local Municipality: Maphumulo Ward : 12 Coordinates: S 29° 03' 33" E 31° 04' 59"	Total No. of Beneficiaries: 2 No. of Youth: 1 No. of Woman: 1 No. of Persons with Disability:1	Total No. of Jobs Created:12 Permanent :2 Seasonal/Temporal Jobs: 10	50 sow unit	R7 450 000.00

ACTIVITIES IMPLEMENTED IN 2022/23/2023/24

<p>CASP Budget 2021/22 : R250 000,00 Total expenditure: R250 000,00</p> <p>CASP Budget 2022/23 : R3 100 000,00 Total expenditure: R3 100 000,00</p> <p>CASP Budget 2023/24 R 4 100 000,00 Total expenditure: R4 100 000,00</p>	<p><u>Implemented activities :2021/22</u></p> <ul style="list-style-type: none"> ▪ EIA <p><u>Implemented activities :2022/23</u></p> <ul style="list-style-type: none"> ▪ Drilling of borehole ▪ Professional services (Land survey) and Earthworks including: Excavations ,site leveling and site access road ▪ Supply and installation of 42m X 10m Steel portal frames with IBR sheet roofing for 3 buildings <p><u>Implemented activities :2023/24</u></p> <ul style="list-style-type: none"> ▪ Completion of 3 buildings ▪ Construction of slurry dam ▪ Purchase of breeding stock ,medication and feed 	<p>Progress to date</p> <ul style="list-style-type: none"> ▪ Project being finalized (equipment under installation, pregnant sows ordered and awaiting delivery)
--	--	--



DLEKS PTY LTD

I L E M B E - P I G G E R Y

POE



- **Water reservoirs linked to a borehole**



- **Piggery houses**



- **Slurry dam**

MDANOZI

PROJECT LOCATION	BENEFICIARY ANALYSIS	JOB CREATION	PROJECT SIZE	TOTAL BUDGET (R)
District Municipality: Uthukela Local Municipality: Alfred Duma	Total No. of Beneficiaries: No. of Youth: 0 No. of Woman: 0 No. of People with Disability: 0	Total No. of Jobs Created: Permanent: 2 Seasonal/Temporary Jobs: 6	62 Beef master	R7,498,370.00

Activities Implemented in 2023/24			
Budget 2023/24 R2922,533.87	Activities Implemented:	2023/24 Budget received	1. Expenditure
	1. 6Kms Fence 2. Handling Facility 3. Medication and feed 4. Purchasing of breeding stock	R 3 000 000 Expenditure R 3 000 000	2. R 3 000 000 3. Fence R 718 354 4. Handling facility R 384 220 5. Breeding stock R 1 750 000 6. Feed R 147 426.00



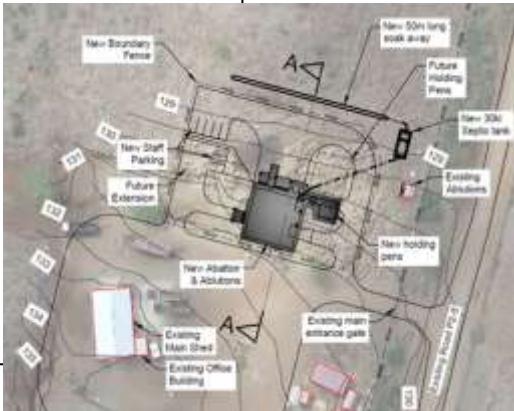


Phangela Trading cattle feedlot and abattoir

UMKHANYAKUDE-BEEF

PROJECT LOCATION	BENEFICIARY ANALYSIS	JOB CREATION	Project Size	TOTAL BUDGET (R)
District Municipality: UMKHANYAKUDE	Total No. of Beneficiaries: 01 No. of Youth: 0 No. of Women: 0 No. of People with Disability: 0	Total No. of Jobs Created:40 Temporal Jobs: 13	Rural abattoir (6 units /day) / 1500 cattle unit	R 17 500 000.00

ACTIVITIES IMPLEMENTED IN 2021/22		Activities to Implemented in 2022/23		STATUS
CASP Budget Approved R 3000 000.00	Activities implemented <ul style="list-style-type: none"> ➤ Planning, Engineering design ➤ Site establishment cost and abattoir main structures ➤ Masonry work, Roof sheeting and concrete floors ➤ Project Management 	CASP Budget 2022/2023 R7 500 000,00	Activities implemented: <ul style="list-style-type: none"> ➤ Complete Abattoir Block work and holding pens ➤ Abattoir equipment and water reticulation system ➤ Purchase of weaners ➤ Feed ingredients ➤ Vaccine & Medicine 	Project is operational





ACTIVITIES IMPLEMENTED IN 2023/24		PROJECT STATUES
<p>CASP Budget required 2023/24</p> <p>R7 000 000</p>	<p>Activities Implemented</p> <ul style="list-style-type: none"> ➤ Purchase of 300 weaners: R3 000 000.00 ➤ Purchase of feed ingredients: hominy chops: R550 000.00 SB100 and Procon 33: R4000 000, Zilmex : R50 000 ➤ Purchase of 41 weaners:R 410 000.00 ➤ Purchase of medicine and vaccine:R 40 000.00 ➤ Purchase of 5 ton refrigerated truck:R1 200 000.00 ➤ Construction of 4x animal holding pens including water & feed troughs and water reticulation system:R1 350 000.00 	<p>Project completed and handed over by the Hon MEC.</p>





PROJECT LOCATION	BENEFICIARY ANALYSIS	JOB CREATION	OVERAL ACTIVITIES	TOTAL BUDGET (R)
District Municipality: uMkhanyakude Local Municipality: Jozini Coordinates: S 28°3'33.97" E32°21'0.25"	Total No. of Beneficiaries:05 No. of Youth: 05 No. of Woman: 04 No. of People with Disability: 0	Total No. of Jobs Created: 04 Permanent: 00 Temporary Jobs:04	-Purchase of tractor, purchase of boomsprayer, purchase of mould board plough, purchase of disc plough, bush clearing of 37ha, construction of storage shed, site establishment & purchase of fencing material, labour to erect fence, purchase of production inputs inputs,supply, deliver&install irrigation	R4 650 000,00

ACTIVITIES IMPLEMENTED IN 2023/24	PROJECT STATUES
-----------------------------------	-----------------

CASP Budget required 2023/24 R 4 650 000.00 Expenditure: R 4 650 000	Activities Implemented <ul style="list-style-type: none"> ➤ Purchase of tractor 60kw: R 727 432.00 ➤ Purchase of boom sprayer: R125 124.00 ➤ Purchase of mould board plough: R122 000 ➤ Purchase of disc plough: R35 850 ➤ Bush clearing of 37ha:R199 985.00 ➤ Construction of storage shed: R 1 000 000.00 ➤ Site establishment & purchase of fencing materials: R 208 000.00 ➤ Labour to erect fence: R 83 240.00 ➤ Purchase of production inputs: R 299 576.60 ➤ Supply, deliver & installation of irrigation system for 37ha: R 1 848 792.40 	All activities for 2023/24 have been completed.
---	---	---

UMKHANYAKUDE DM



PROJECT LOCATION	BENEFICIARY ANALYSIS	JOB CREATION	OVERAL ACTIVITIES	TOTAL BUDGET (R)
District Municipality: uMkhanyakude Local Municipality: Jozini Coordinates: S 28°3'33.97" E32°21'0.25"	Total No. of Beneficiaries:05 No. of Youth: 05 No. of Woman: 04 No. of People with Disability: 0	Total No. of Jobs Created: 04 Permanent: 00 Temporary Jobs:04	-Purchase of tractor, purchase of boom sprayer, purchase of mould board plough, purchase of disc plough, bush clearing of 37ha, construction of storage shed, site establishment & purchase of fencing material, labour to erect fence, purchase of production inputs inputs, supply, deliver & install irrigation	R4 650 000,00

ACTIVITIES IMPLEMENTED IN 2023/24	PROJECT STATUES
-----------------------------------	-----------------



UMKHANYAKUDE DM



PROJECT LOCATION	BENEFICIARY ANALYSIS	JOB CREATION	Project Size	TOTAL BUDGET (R)
District Municipality: Umzinyathi District Local Municipality: Endumeni Coordinates: S 28°18,01" : E30°16'52"	Total No. of Beneficiaries:1 No. of Youth: 0 No. of Woman: 0 No. of Persons with Disability: 0	Total No. of Jobs Created: 14 Permanent: 04 Temporal Jobs: 10	1900 HA	R5 500 000

ACTIVITIES IMPLEMENTED IN 2023/24		PROGRESS
CASP Budget R1 000 000. Expenditure R1 000 000	Activities to be Implemented <ul style="list-style-type: none"> Erection of 8.5 km barbed wire fence @ R680 000; 4-ton trailer @ R 90 000; 5000 litre water trailer @ R 100 000; Firefighter @ R 130 000. 	<ul style="list-style-type: none"> The items have been procured 100%. 4,5km fenced.





PROJECT LOCATION	BENEFICIARY ANALYSIS	JOB CREATION	Project Size	TOTAL BUDGET (R)
District Municipality: King Cetshwayo Local Municipality: uMhlathuze Ward: 31 Coordinates: S 30°43'54.9" E31°45'42.5"	Total No. of Beneficiaries: 1 No. of Women: 0 No. of Youth: 0 No. of People with Disability: 0	Total No. of Jobs Created: 5 Permanent: 5 Seasonal/Temporal Jobs: 5	200 Weaners Feedlot Unit	R 7 610 654,00

Activities to be implemented in 2023/24

Voted Budget 2023/2024:	Activities planned 2023/24:	Progress up to date:	Comment on overall progress:
R 3 474 100,00	<ol style="list-style-type: none"> 1. Installation of 13 ha Irrigation 2. Purchasing of 40 Weaners 3. Purchasing of feed ingredients 4. Installation of Solar panels 	<ul style="list-style-type: none"> - Installation of 13 ha irrigation completed - Weaners procured and delivered - Feed ingredients procured and delivered - Project is completed 	The project is 100 percent complete





KWANODUMO AGRI-FORESTRY (PTY) LTD

PROJECT LOCATION	BENEFICIARY ANALYSIS	JOB CREATION	Project Size	TOTAL BUDGET (R)
District Municipality: uGu LM: Umuziwabantu Ward: Guns Drift Coordinates: S20°43'32.45" E29°49'52.21"	Total No. of Beneficiaries:03 No. of Youth: 1 No. of Woman: 1 No. of People with Disability: 0	Total No. of Jobs Created: 25 Permanent: 05 Temporal Jobs: 20	200 breeding herd	2023/24:R2 068 000 2024/25:R1 472 000 2025/26:R3 748 000 Total Budget : R7 288 000.00

ACTIVITIES IMPLEMENTED IN 2023/24		PROGRESS
CASP Budget R2 068 000 Expenditure R2 068 000	Activities to be Implemented <ul style="list-style-type: none"> Construction of a Beef handling facility 15,2km Fencing (Boundary and internal fence) Erection and equipping of Borehole 	<ul style="list-style-type: none"> Animal Handling Facility is completed. Fencing of 15.2km is complete. Borehole is erection and equipping is complete. All activities of year 1 are complete.



BEEF PROJECT



PROJECT LOCATION	BENEFICIARY ANALYSIS	JOB CREATION	Project Size	TOTAL BUDGET (R)
District Municipality: uGu LM: Umuziwabantu Ward: KwaMachi Coordinates: S 29°57'13.91" : E30°41'66.17"	Total No. of Beneficiaries:1 No. of Youth: 0 No. of Woman: 01 No. of People with Disability: 0	Total No. of Jobs Created: 27 Permanent: 02 Temporal Jobs: 25	175 Breeding herd	2023/24:R2 103 000 2024/25:R3 385 000 2025/26:R1 872 000 Total Budget :R7 360 000

ACTIVITIES IMPLEMENTED IN 2023/24		PROGRESS
CASP Budget R2 103 000 Expenditure R2 103 000	Activities to be Implemented <ul style="list-style-type: none"> Erection of 18,km km fence (boundary and internal) Construction of animal handling facility with the loading ramp and force pen. 	<ul style="list-style-type: none"> Fencing of 18.1 km is completed. Handling facility with loading ramp and force pan is completed.





VFT FARMING AND AGRI SERVICES

PROJECT LOCATION	BENEFICIARY ANALYSIS	JOB CREATION	PROJECT SIZE	TOTAL BUDGET (R)
District Municipality: Ilembe Local Municipality: Mandeni Ward :2 Coordinates: S29°07'40.8" E31°33'57.6"	Total No. of Beneficiaries: 1 No. of Youth: 0 No. of Woman: 0 No. of Persons with Disability:0	Total No. of Jobs Created:10 Permanent : 5 Seasonal/Temporal Jobs: 5	32ha	R150 000,00

ACTIVITIES IMPLEMENTED IN 2023/24

CASP Budget 2023/24:	Activities implemented	Project status
R 150 000,00 Total expenditure: R150 0000,00	<ul style="list-style-type: none"> Application for water use license @ R80 870,00 Irrigation design for 10ha macadamia @ R69 130,00 	<ul style="list-style-type: none"> Water use license and irrigation design completed. Irrigation development and macadamia planting to be done in 2024/25



ILEMBE DM



PROPOSED SCHEMATIC PLAN FOR THE PROPOSED RIVER ABSTRACTION SCHEMATIC PLAN FOR THE PROPOSED RIVER ABSTRACTION SCHEMATIC PLAN FOR THE PROPOSED RIVER ABSTRACTION

Figure 11 1:100 scale flood map for the proposed abstraction



MVELO AGRIC PRIMARY COOPERATIVE LIMITED

PROJECT LOCATION	BENEFICIARY ANALYSIS	JOB CREATION	PROJECT SIZE	TOTAL BUDGET (R)
District Municipality: Ilembe Local Municipality: Maphumulo Ward : 11 Coordinates: S 29° 11'58.20 " E 31° 24'54.08"	Total No. of Beneficiaries: 6 No. of Youth: 3 No. of Woman: 3 No. of Persons with Disability:2	Total No. of Jobs Created:3 Permanent : 3 Seasonal/Temporal Jobs: 0	1000 beehives (Beekeeping)	R1 059 860.00

ACTIVITIES IMPLEMENTED IN 2023/24

CASP Budget 2023/24:

R 1 059 860,00

Total expenditure:

R1 059 860,00

Implemented Activities

- Drilling and equipping of borehole
- Erection of fence
- Phase 1 construction of processing shed with ablution facility, Water and electricity connection

Project status

Under implementation, progress is good

Borehole



Processing shed



Fencing





PROJECT LOCATION	BENEFICIARY ANALYSIS	JOB CREATION	COMMODITY TYPE	TOTAL BUDGET (R)
District Municipality: uMgungundlovu Local Municipality: Umshwathi LM Coordinates: S 30.41051 : E 29.89705	Total No. of Beneficiaries: 01 No. of Women: 01 No. of Youth: 0 No. of Persons with Disability: 0	Total No. of Jobs Created: 05 Permanent: 02 Seasonal/Temporal Jobs: 03	Soya production	R 4 500 000

ACTIVITIES IMPLEMENTED IN 2023/24	PROGRESS
-----------------------------------	----------

<p>CASP Budget 2023/24 R 3 000 000</p> <p>Total expenditure: R 3 000 000,00</p>	<p>Activities to be Implemented</p> <ul style="list-style-type: none"> • Construction of a new warehouse: 15x25x8m2 @ R 1 500 000; • Purchase of 3 containers: 12m long & 10 ton @ R 300 000, • Purchase of Soya mince raw material @ R 1 200 000. 	<ul style="list-style-type: none"> • Soya raw material purchased and delivered; • Construction of warehouse on progress :steel has been delivered on site, awaiting erection upon receipt of payment by the supplier • Site leveling has been done for the warehouse, holes for steel anchors dug • 3 x containers purchased and delivered on site
---	--	--





IGEJA LABALIMI FARMING (Pty) LTD

UTHUKELA DM

PROJECT LOCATION	BENEFICIARY ANALYSIS	JOB CREATION	PROJECT SIZE	TOTAL BUDGET (R)
District Municipality: UThukela Local Municipality: Alfred Duma Coordinates: S 28° 24' 28.5 " E 29 0 41'.4"	Total No. of Beneficiaries: 1 No. of Youth: 0 No. of Woman: 0 No. of Persons with Disability: 0	Total No. of Jobs Created: 19 Permanent : 6 Seasonal/Temporal Jobs: 13	1200 HA	R 8 790 000

ACTIVITIES IMPLEMENTED IN 2023/24		PROGRESS
Voted Budget R 3 798 910 Expenditure to date: R 3 798 910,00	Funds Activities to be Implemented <ul style="list-style-type: none"> ▪ Purchase Tractor 83 kw @R 1 200 00.00, ▪ Purchase implements : <ul style="list-style-type: none"> ▪ 20 Disc harrow @ R 200 000.00, 800L Boom Sprayer @ R 70 000.00, 4 row planter @ R 300 000,00, 5 tine ripper @ R 150 000.00, Purchase of 2m Mower @ R 150 000.00, ▪ Purchase Beefmaster pregnant heifers @ R 27 000.00 X 53= R 1 431 000.00, ▪ Purchase Beefmaster Bulls @ R 65 000.00 x 2= R 130 000.00 ▪ Purchase vaccine and medication @ R 167 910.00 , 	<ul style="list-style-type: none"> ▪ Tractor purchased and delivered, ▪ 20 Disc harrow, 800L Boom Sprayer 4 row planter, 5 tine ripper, Purchase of 2m Mower purchased and delivered on site. ▪ Beefmaster pregnant heifers and bulls purchased and delivered ▪ Vaccine and medication delivered ▪ 2023/24 activities are 100% complete





AMAFU FARMING (PTY) LTD

PROJECT LOCATION	BENEFICIARY ANALYSIS	JOB CREATION	PROJECT SIZE	TOTAL BUDGET (R)
District Municipality: UThukela Local Municipality: Inkosi Langalibalele Coordinates: S 29,077535 E 30, 056488	Total No. of Beneficiaries: 1 No. of Youth: 0 No. of Woman: 0 No. of Persons with Disability:0	Total No. of Jobs Created: 6 Permanent : 2 Seasonal/Temporal Jobs: 4	650HA	R 3 790 000

ACTIVITIES IMPLEMENTED IN 2023/24		PROGRESS
Voted Funds 2023/24 Budget R 500 000 Expenditure to date: R 499 995,50	Activities to be Implemented <ul style="list-style-type: none"> Bonsmara heifers @ R 22 000.00 X 19= R 418 000.00, Bonsmara bulls @ R 65 000.00 X 1= R 65 000.00, and medication@ R 17 000.00 	<ul style="list-style-type: none"> All activities for 2023/24 are 100% complete. 19 Bosmara heifers purchased and delivered 1 bull purchased and delivered Vaccines and medication purchased and delivered Activities for 2023/24 are 100% complete





MPEMBE CONSULTING CC

PROJECT LOCATION	BENEFICIARY ANALYSIS	JOB CREATION	PROJECT SIZE	TOTAL BUDGET (R)
District Municipality: UThukela Local Municipality: Inkosi Langalibalele Coordinates: S 28°53'48.7" E 29°49'02.9"	Total No. of Beneficiaries: 1 No. of Youth: 0 No. of Woman: 0 No. of Persons with Disability:0	Total No. of Jobs Created: 5 Permanent : 2 Seasonal/Temporal Jobs: 3	1290 ha	R 4 580 000

ACTIVITIES IMPLEMENTED IN 2023/24		PROGRESS
Voted Funds 2023/24 Budget R 500 000 Expenditure: R 500 000.00	Activities to be Implemented <ul style="list-style-type: none"> ▪ Purchase of 19 Boran in calf heifers @ R22 000 each X 19 = R 418 000. ▪ Purchase of 1 Boran bull @ R65 000 each ▪ Purchase of Medication and vaccines @ R 17 000 	<ul style="list-style-type: none"> • All activities for 2023/24 are 100% complete. • 19 boran heifers purchased and delivered • 1 bull purchased and delivered • Vaccines and medication purchased • Additional 09 heifers purchased with savings. • 2023/24 activites are 100%

UTHUKELA DM





NDLUTSHA GOATS

UMKHANYAKUDE-GOATS

PROJECT LOCATION	BENEFICIARY ANALYSIS	JOB CREATION	TOTAL BUDGET (R)
District Municipality: UMKHANYAKUDE	Total No. of Beneficiaries: 01 No. of Youth: 0 No. of Women: 0 No. of People with Disability: 0	Total No. of Jobs Created: Permanent Jobs: 1	R 1 999 920

ACTIVITIES IMPLEMENTED IN 2021/22	PROJECT STATUS
CASP Budget Approved R 1 999 920	To be completed in 2024/25

- Construction of goat shed @R500 000.00
- Erection of grazingcamps fence @R100 000.00
- Purchase of bakkie @R580 000.00
- Purchase of breeding stock @R130 000.00
- Purchase of feed @R11 095.00
- Purchase of medicines and vaccines @R4 805.00





KAONAFATSO YA DIKGOMO (KYD)

- Programme is implemented in partnership with Agricultural Research Counsel (ARC)
- The Kaonafatso ya Dikgomo (KyD) Scheme is a special purpose vehicle aimed at accelerating the participation of small-holder producers into the mainstream livestock industries.
- Kaonafatso ya Dikgomo covers the whole spectrum of animals in agriculture.
- A wide range of livestock production systems are taken into account using the National Animal Recording and Improvement Schemes (Schemes) as an anchor for all programme activities
- To be implemented in 7 districts, i.e. Umzinyathi, Uthukela, Zululand, Umkhanyakude, King Cetshwayo, Harry Gwala and Amajuba
- But due to FMD outbreak – 3 districts prioritized i.e. Umkhanyakude, Zululand and King Cetshwayo as disease management areas
- Project Steering committee in place – EAS, VET and ARC
- KYD district coordinators forum is in place – implement KYD
- Monitoring is through meetings, site visits and reports with invoices

OPPORTUNITIES– KAONAFATSO YA DIKGOMO (KYD)

- Roll-out to the rest of the Province
- Market expansion opportunities through feedlot and abattoirs
- Expansion and integration of livestock commodities e.g. Goat project



KAONAFATSO YA DIKGOMO (KYD)

Key result area	KYD Indicators	3-year target	Achievements				REASONS FOR DEVIATION
			2021/22	2022/23	2023/24	TOTAL	
1. Employment of interns	Graduates receive work experience	18	6	4	6	16	2 OFFICIALS DESEASED
2. KyD Farmer Support Team (FST) Workshops	Farmer support team workshops for extension staff and AHT	36	24	28	27	79	More drive was required due to FMD spread
3. Farmer training and advisory services	Farmers trained and advised on animal handling	13200	10110	4836	5243	20189	More drive was required due to FMD spread
	Farmers practice individual animal identification (collection of raw data on site)	6060	2622	2992	2517	8131	More drive was required due to FMD spread
4. Registration on the INTERGIS	Smallholder farmers data uploaded	13 060	4501	4380	5653	14534	More drive was required due to FMD spread
	Animals uploaded by Smallholder farmers	12 000	0	10130	23634	43764	More drive was required due to FMD spread
5. KyD Farmer's Days	Farmer's days	45	15	22	25	62	Demand by livestock farmers
6. Facilitate market access 97	Livestock auctions conducted	52	12	15	18	46	Livestock sales restrictions due to FMD
	Enterprise development	1	0	1	0	1	#PHEZ'KOMKHONO



3. PROJECTS PLANNED FOR 2024/25



Producers support rationale

DISTRICTS	FOOD SECURITY INDICATORS (%)											
	Household Food Insecurity Access Scale (HFIAS)			Household Hunger Scale (HHS)			Household Dietary Diversity Score (HDDS)			Food Consumption Score (FCS)		
	Food Secure	Mild/Moderate	Severe	Little/No	Moderate	Severe	Highest	Medium	Lowest	Acceptable	Borderline	Poor
Ugu	25.0	65.0	11.0	85.0	13.0	2.0	85.0	13.0	2.0	79.0	16.0	5.0
UMgungundlovo	32.0	51.0	16.0	83.0	14.0	3.0	75.0	22.0	3.0	72.0	18.0	9.0
Uthukela	30.0	51.0	19.0	78.0	18.0	5.0	78.0	17.0	4.0	83.0	15.0	2.0
Umkhanyakude	28.0	48.0	24.0	72.0	20.0	8.0	74.0	20.0	6.0	53.0	24.0	24.0
King Cetshawayo	27.0	54.0	19.0	78.0	18.0	3.0	83.0	14.0	4.0	80.0	15.0	5.0
Harry Gwala	23.0	57.0	20.0	79.0	17.0	4.0	73.0	22.0	4.0	72.0	22.0	6.0
Umzinyathi	19.0	53.0	28.0	72.0	19.0	9.0	74.0	23.0	3.0	56.0	40.0	4.0
Amajuba	34.0	50.0	15.0	83.0	13.0	4.0	85.0	12.0	3.0	67.0	27.0	6.0
Zululand	14.0	51.0	35.0	65.0	22.0	13.0	67.0	26.0	7.0	71.0	23.0	5.0
iLembe	27.0	53.0	20.0	76.0	18.0	5.0	79.0	17.0	4.0	77.0	15.0	9.0
eThekweni	35.0	53.0	12.0	84.0	13.0	3.0	88.0	11.0	1.0	81.0	18.0	2.0
Province	29.6	53.3	17.1	80.2	15.5	4.3	81.5	15.6	2.9	75.9	19.2	5.0

- The levels of food insecurity varied across districts. 17% of the household in the province suffer from severe food insecurity, while 4,3 suffer from severe hunger. Severe food insecurity was more prevalent in Zululand district where 35% of the households were severely food insecure and 17.1% and 4.3 % experienced severe hunger as determined by HFIAS and HHS, respectively.

PES 3 BUSINESS PLAN FOR 2024/5

DALRRD has allocated KZN DARD a total budget of **R137,620,031.00** for implementation of PES-3 in the financial year 2024/25. PES-3 business plan outlines implementation model that will ensure that all interventions have significant impact in the livelihoods of subsistence farmers and rural households. This model seeks to ensure that all agricultural inputs provided to farmers are used for intended purposes and there is documentable evidence of its use. The models include the following interventions: -

- **Grain and Vegetable**

- Multi-planting Season programme (Production inputs & Mechanization services) for 7313 ha with a budget of **R117 million**
- One Home One Garden programme with budget allocation of **R11 million**

- **Animal Husbandry Intervention**

- Animal husbandry interventions shall cater for animal health support such as medication, vaccines and livestock feed to the value of **R5.5 million**.

- **PES 2 beneficiaries**

- A total of **R4 120 031** has been allocated towards supporting farmers that were identified in the PES 2 phase who were unfortunately not supported due to the LTS national system crashing and the retrieval process taking longer than anticipated up to the end of the financial year 2023-24.
- DALRRD has indicated that additional budget will be allocated to support these farmers and the province will make continuous endeavour to trace these beneficiaries.



KZN TOTAL CASP BUDGET ALLOCATION 2024/25

3.2.1 FUNDING AREA	ALLOCATION (R'000)
CASP INFRASTRUCTURE PROJECTS	133 884
EXTENSION RECOVERY PLAN	48 955
REVITALISATION OF AGRICULTURAL COLLEGES	18 599
AGRI HUBS	86 400
TRAINING AND MENTORSHIP (R'000):	25 802
-Mentorship 6,240m.	
-Short courses 7,800m.	
-Unemployed Agricultural Graduates Youth Programme (UAGYP) stipend 10,962m.	
-SA-GAP training 800.	
TOTAL	313 640



SUMMARY COMMODITIES 2024/25 FINANCIAL YEAR

Commodities	Number of planned projects	Total budget (R)
Red Meat	18	54 103
White Meat	05	8 147
Tannery	1	5 190
Soya Beans	1	1 500
Dairy	2	4 288
Vegetable	07	14 654
		6 589
Macadamia	02	
Fruit	01	1 845
Bee Keeping	01	1 304
Medicinal Herbs	01	1 412
Vet capacitation programme (vets dipping chemicals and vets clinics and mobile lab)	-	34 852
TOTAL	39	133 884



ILIMA/LETSEMA BUDGET PER DELIVERABLES

DELIVERABLES	ACTIVITIES	OUTPUTS	COST/BUDGET	% BUDGET ALLOCATED
Irrigation Development	Installation of Irrigation schemes, develop new technology in irrigation, repairs of pumps.	Increased production	R19 000 000	34,3
Kaonafatso Ya Dikgomo (KYD)	Provision of science-supported services that include information dissemination and technology transfer sessions about various livestock farming topics, ranging from basic animal husbandry practices, animal health, veld condition assessment, record keeping, market access etc.	Improved productivity, skills, market access as well as competitiveness of smallholder livestock farmers	R2 167 000	4
Food Nutrition Security & Mechanisation Programme	Provision of mechanisation services to farmers in 11 District municipalities	Food available	R33 522 000	60,5
Commercialisation of Goats programme	Procurement of veterinary drugs and vaccines.	Improved quality of livestock produced	R700 000	1,2
TOTAL			R55 389 000	100%

THANK YOU

**GROWING
KWAZULU-NATAL
TOGETHER**